

**Display Elektronik GmbH**

# DATA SHEET

**MIP Display**

**DE MIP400240A-W**

(2,7“ MIP, Mono)

**Product Specification**

**Ver.: 1**

**18.05.2026**



# Contents

- 1. General Description and Features .....4
  - 1.1 Features .....4
  - 1.2 LCD Module .....4
- 2. Mechanical Information .....4
- 3. Electrical Specifications.....5
  - 3.1 Absolute Max. Ratings .....5
  - 3.2 Timing Characteristic of The LCD .....7
- 4. Optical Characteristics .....9
  - 4.1 Optical characteristic of the LCD.....9
- 5. I/O Terminal ..... 11
  - 5.1 Recommended Connector : ..... 11
  - 5.2 Block Diagram .....12
- 6. Displayed Color and Input Data .....13
- 7. Reliability Condition.....14
- 8. Dimensional Outlines.....15

## 1. General Description and Features

This TFT-LCD module is a reflective active-matrix with slightly transmissive memory liquid crystal display module with CG silicone thin film transistor.

### 1.1 Features

- Reflective active-matrix with slightly transmissive panel of white and black.
- 2.7" WQVGA screen has 400\*240 resolution. (96,000 pixels stripe array)
- Display control by serial data signal communication.
- Super low power consumption TFT panel.

### 1.2 LCD Module

Item	Specification	Unit
Screen Size	2.7 Inch	Diagonal
Display Resolution	400 x 240	Pixel
Active Area	58.80 x 35.28	mm
Outline Dimension	63.20 x 43.22 x 1.65	mm
Display Mode	Memory In Pixel, Monochrome / Normally White	--
Surface Treatment	AG	
Surface Hardness	>=3H	--
Pixel Array	Stripe Array	--
Pixel Size	0.147 x 0.147	mm
Input Interface	3 Wire SPI	--

## 2. Mechanical Information

Item		Min.	Typ.	Max.	Unit	Note
Module Size	Horizontal (H)	62.90	63.20	63.50	mm	--
	Vertical (V)	42.92	43.22	43.52	mm	--
	Thickness (T)	1.35	1.65	1.95	mm	(1)
Weight		--	11	--	g	--

Note (1) Not Include Component. Refer to the Outline Dimension Drawing as attached.

### 3. Electrical Specifications

#### 3.1 Absolute Max. Ratings

##### 3.1.1 Absolute Ratings of Environment

If the operating condition exceeds the following absolute maximum ratings, the TFT LCD module may be damaged permanently.

( $T_a=25\pm 2^\circ\text{C}$ ,  $V_{SS}=\text{GND}=0$ )

Item	Symbol	Min.	Max.	Unit	Note
Storage Temperature	$T_{STG}$	-30	80	$^\circ\text{C}$	(1)
Operating Temperature	$T_{OPR}$	-20	70	$^\circ\text{C}$	(1,2,3)

Note (1) 95 % RH Max. ( $40^\circ\text{C} \geq T_a$ ). Maximum wet-bulb temperature at  $39^\circ\text{C}$  or less. ( $T_a > 40^\circ\text{C}$ )  
No condensation.

Note (2) In case of below  $0^\circ\text{C}$ , the response time of liquid crystal (LC) becomes slower and the color of panel becomes darker than normal one. Level of retardation depends on temperature, because of LC's character

Note (3) Only operation is guaranteed at operating temperature. Contrast, response time, another display quality are evaluated at  $+25^\circ\text{C}$ .

#### 3.1.2 Electrical Absolute Maximum Ratings

##### 3.1.2.1 TFT-LCD Module

( $V_{SS}=\text{GND}=0$ )

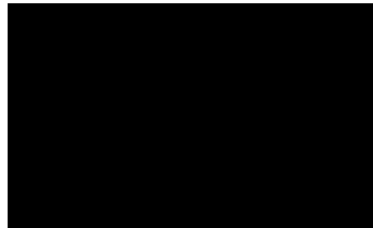
Parameter	Symbol	Min.	Max.	Unit	Remark
Power Voltage	VDD	-0.3	5.8	V	--
	VDDA	-0.3	5.8	V	--
	VHI	--	VDD	V	--
	VLI	-0.3	--	V	--

3.1.1 DC Electrical Characteristics of the TFT LCD

(Ta=25±2°C, Vss=GND=0)

Item	Symbol	Min.	Typ.	Max.	Unit	Remark	
Power Supply	VDD	4.8	5.0	5.5	V	--	
	VDDA	4.8	5.0	5.5	V	--	
Input Voltage for Logic	Hi	VIH	2.7	3.0	VDD	V	--
	Lo	VIL	VSS	VSS	VSS+0.15	V	--

Note1: fv =60Hz, Ta=+25°C , Display pattern: Black pattern



## 3.2 Timing Characteristic of The LCD

## 3.2.1 Recommend Operating Conditions and DC Characteristics

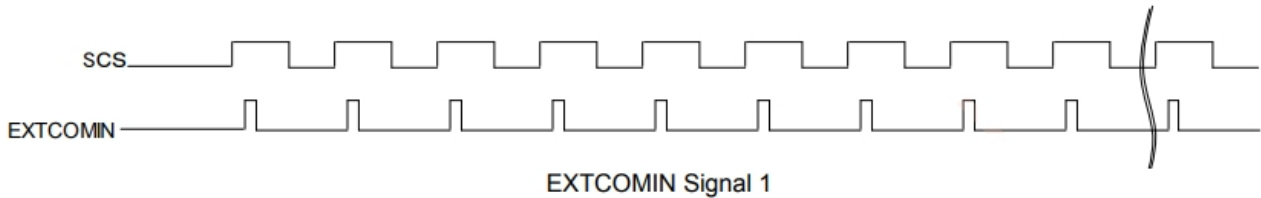
Item	Symbol	Min.	Typ.	Max.	Unit	Remark
Frame Frequency	fSCS	1	1	20	Hz	Where EXTMODE=Lo
		--	--	20	Hz	Where EXTMODE=Hi
Clock Frequency	fSCLK	--	1	2	MHz	--
Vertical Interval	tV	50	--	1000	ms	--
COM Frequency	fCOM	0.5	--	10	Hz	--

## 3.2.2 Input Signal timing Parameters

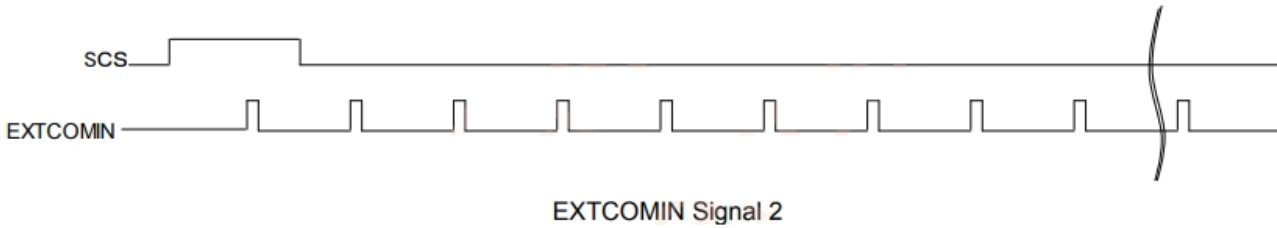
VDDA=+5.0V、VDD=+5.0V、GND=0V、Ta=25°C

	Item	Symbol	Min.	Typ.	Max.	Unit	Remark
SCS	Rise time	trSCS	--	--	50	Ns	
	Fall time	tfSCS	--	--	50	ns	
	High duration	twhSCS	220	--	--	us	Data update mode
			12	--	--	us	Hold mode
	Low duration	twlSCS	1	--	--	us	
	Set up time	tsSCS	3	--	--	us	
	Hold time	thSCS	1	--	--	us	
SI	Rise time	trSI	--	--	50	ns	
	Fall time	trSI	--	--	50	ns	
	Set up time	trSI	120	--	--	ns	
	Hold time	trSI	190	--	--	ns	
SCLK	Rise time	trSCLK	--	--	50	ns	
	Fall time	tfSCLK	--	--	50	ns	
	High duration	twhSCLK	200	450	--	ns	
	Low duration	twlSCLK	200	450	--	ns	
EXTCOMIN	Frequency	fEXTCOMIN	1	1	20	Hz	
	Rise time	trEXTCOMIN	--	--	50	ns	
	Fall time	tfEXTCOMIN	--	--	50	ns	
	High duration	twhEXTCOMIN	1	--	--	us	
DISP	Rise time	trDISP					
	Fall time	tfDISP					

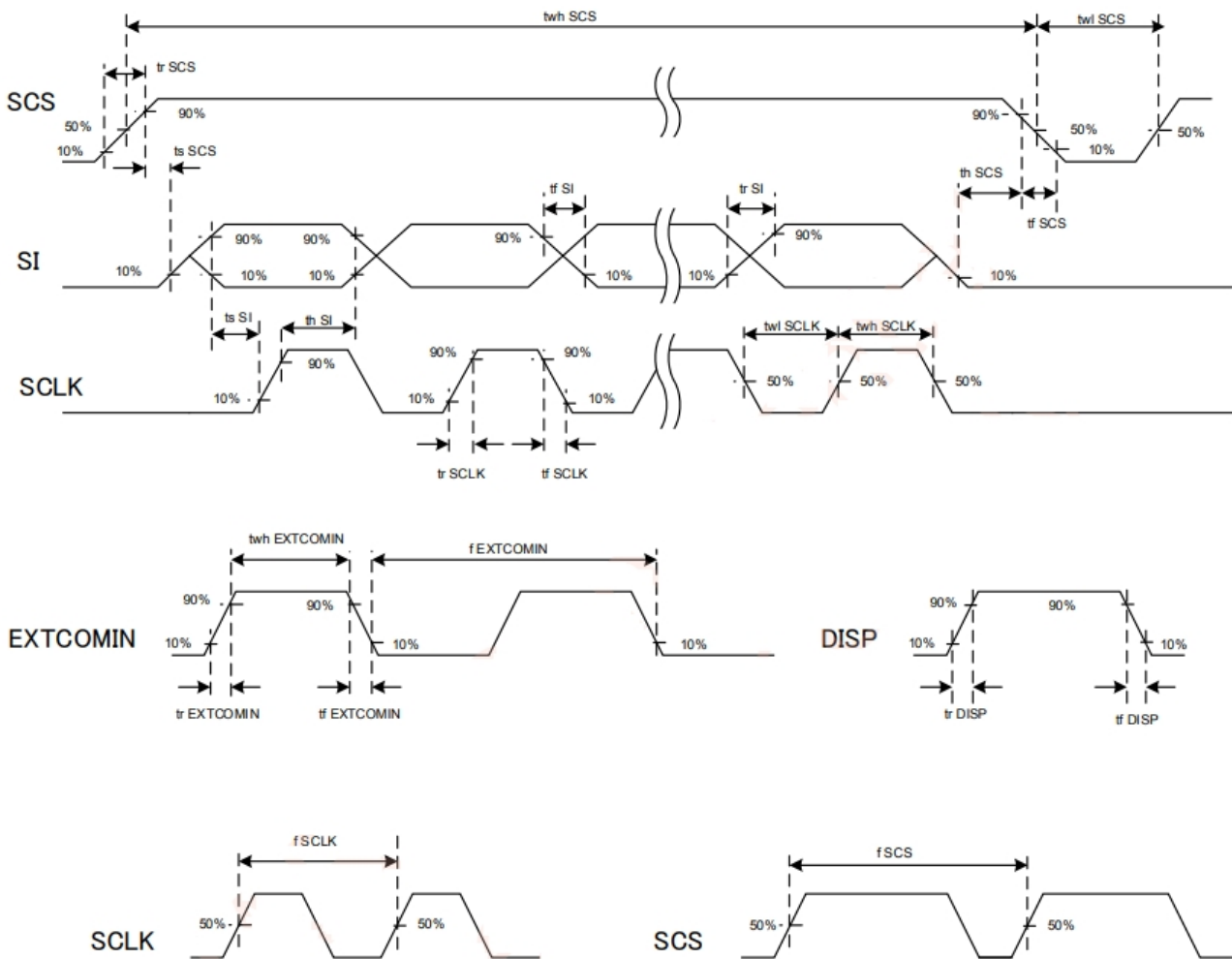
Please make the EXTCOMIN frequency less than the frame rate frequency.



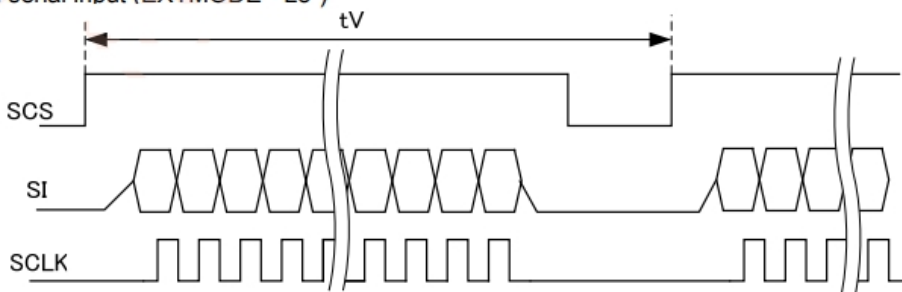
When the display is maintained after writing of the displayed data, is not applied.  
 (Please keep SCS to "Lo" when you maintain current display after writing of the display data.)



3.2.3 Signal Timing



COM signal serial input (EXTMODE="Lo")



4. Optical Characteristics

4.1 Optical characteristic of the LCD

The following items are measured under stable conditions. The optical characteristics should be measured in a dark room or equivalent state with the methods.

Measuring equipment: LCD-5200 / DMS803, CM700d

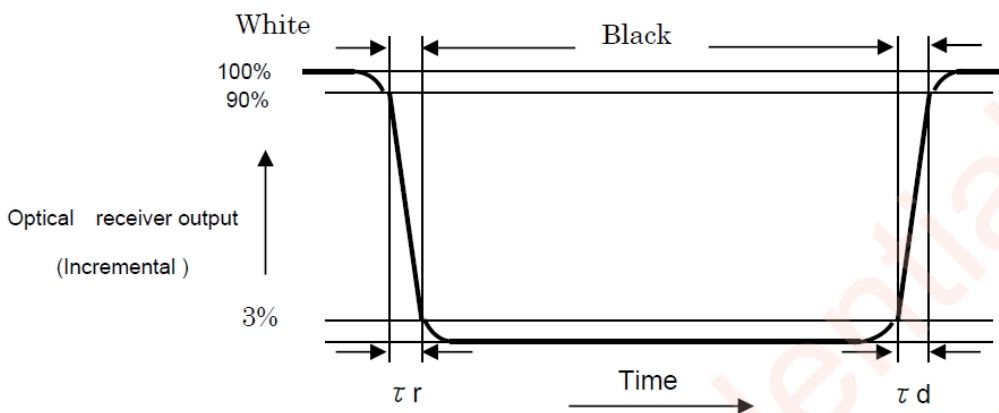
Item	Symbol	Condition	Min	Type	Max	Unit	Note	
Response Time	Tr	$\theta=0^\circ$	--	10	--	ms		
	Tf		--	20	--	ms		
Contrast Ratio	CR	At optimized viewing angle	--	14	--	--		
Reflection Ratio	R		--	17.5	--	%		
Transmission Ratio	T		--	0.25	--	%		
Color Chromaticity (CIE 1931)	White	x	$\theta=0^\circ$	--	0.305	--	--	LCD-5200 DMS803
		y	Normal Viewing Angle	--	0.330	--		
Viewing Angle	Hor.	$\theta_R$	$CR \geq 2$	40	55	--	Degree	CM700d
		$\theta_L$		40	55	--		
	Ver.	$\theta_U$		40	60	--		
		$\theta_D$		40	60	--		

a. Test equipment setup

After stabilizing and leaving the panel alone shall be warmed up for the stable operation of LCM, the measurement should be executed. Measurement should be executed in a stable, windless, and dark room. Optical specifications are measured by Topcon BM-7(fast) with a viewing angle of  $2^\circ$  at a distance of 50cm and normal direction.

b. Definition of response time: Tr and Tf

The response time is defined as the following figure and shall be measured by switching the input signal for "black" and "white".

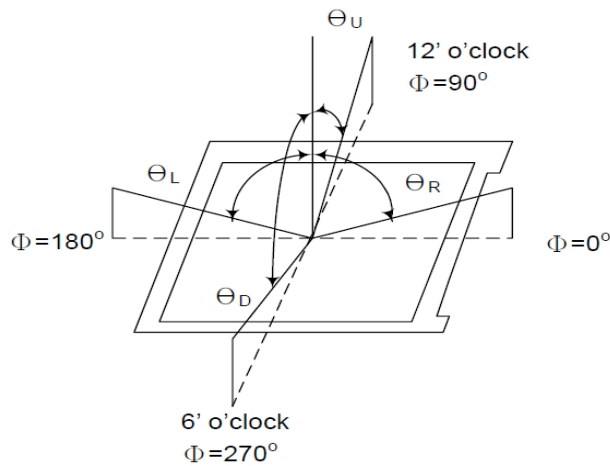


c. Definition of contrast ratio:

$$\text{Contrast Ratio (CR)} = \frac{\text{Brightness measured when LCD is at "white state"}}{\text{Brightness measured when LCD is at "black state"}}$$

d. Measured at the center area of the panel when all the input terminals of LCD panel are electrically opened.

e. View Angle



f. Definition of Luminance of White: Luminance of white at the center points

Light Source of Back-Light Unit	LED Type
---------------------------------	----------

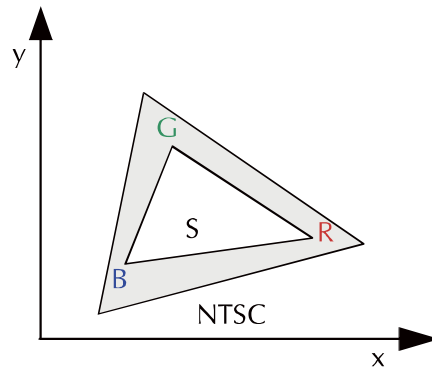
g. Definition of White Uniformity

$$\text{White Uniformity} = \frac{\text{Min. luminance of white among 9-points}}{\text{Max. luminance of white among 9-points}} \times 100\%$$

h. The definition of Color Gamut -Color Chromaticity CIE 1931

Color coordinate of white & red, green, blue at center point.

Color Gamut : NTSC(%) = ( RGB Triangle Area / NTSC Triangle Area ) x 100



**5. I/O Terminal****5.1 Recommended Connector:**

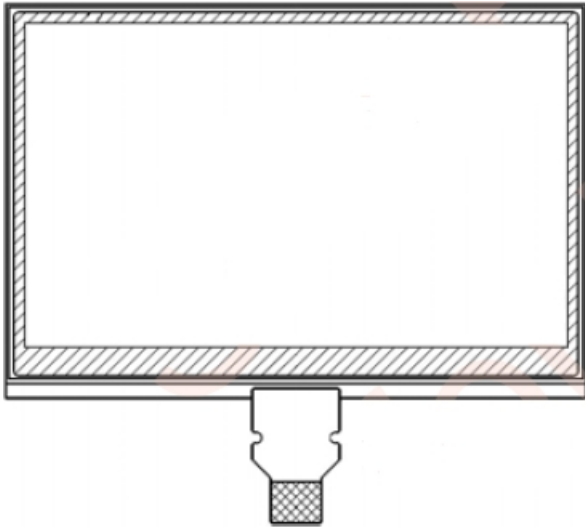
AYF531035 (Panasonic) or FH34SRJ-10-0.5SH(HRS) or compatible

Pin No.	Symbol	I/O	Function	Remark
1	SCLK	I	Serial clock signal	
2	SI	I	Serial input signal	
3	SCS	I	Chip select signal	
4	EXTCOMIN	I	COM inversion polarity input pin	
5	DISP	I	Display ON / OFF switching signal	
6	VDDA	P	Power Source for Analog	
7	VDD	P	Power Source for Logic	
8	EXTMODE	I	COM inversion mode switch terminal	
9	VSS	P	Logic ground	
10	VSSA	P	Analogue ground	

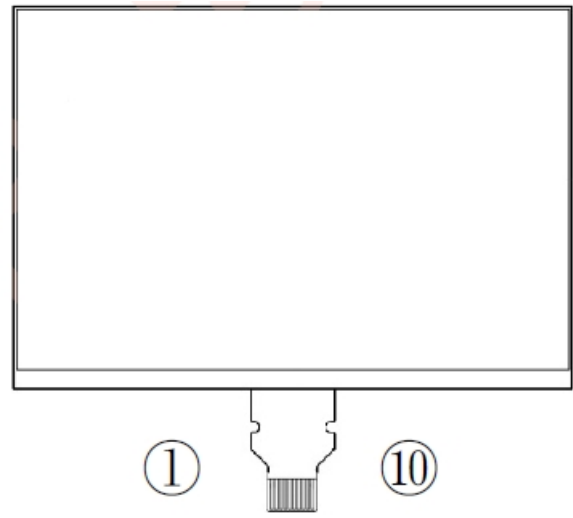
## Notes:

- 1) NC Pin must be retained; this pin can't contact GND or other signal.
- 2) GND Pin must ground contact, can not be floating.

5.2 Block Diagram



Display surface



Rear surface

6. Displayed Color and Input Data

GL	AG0	AG1	AG2	AG3	AG4	AG5	AG6	AG7
1	1	0	0	0	0	0	0	0
2	0	1	0	0	0	0	0	0
3	1	1	0	0	0	0	0	0
4	0	0	1	0	0	0	0	0
5	1	0	1	0	0	0	0	0
6	0	1	1	0	0	0	0	0
7	1	1	1	0	0	0	0	0
8	0	0	0	1	0	0	0	0
9	1	0	0	1	0	0	0	0
10	0	1	0	1	0	0	0	0
11	1	1	0	1	0	0	0	0
12	0	0	1	1	0	0	0	0
13	1	0	1	1	0	0	0	0
14	0	1	1	1	0	0	0	0
15	1	1	1	1	0	0	0	0
16	0	0	0	0	1	0	0	0
17	1	0	0	0	1	0	0	0
18	0	1	0	0	1	0	0	0
19	1	1	0	0	1	0	0	0
20	0	0	1	0	1	0	0	0
21	1	0	1	0	1	0	0	0
22	0	1	1	0	1	0	0	0
23	1	1	1	0	1	0	0	0
24	0	0	0	1	1	0	0	0
25	1	0	0	1	1	0	0	0
26	0	1	0	1	1	0	0	0
27	1	1	0	1	1	0	0	0
28	0	0	1	1	1	0	0	0
29	1	0	1	1	1	0	0	0
30	0	1	1	1	1	0	0	0
31	1	1	1	1	1	0	0	0
32	0	0	0	0	0	1	0	0
33	1	0	0	0	0	1	0	0
34	0	1	0	0	0	1	0	0
35	1	1	0	0	0	1	0	0
36	0	0	1	0	0	1	0	0
37	1	0	1	0	0	1	0	0
38	0	1	1	0	0	1	0	0
39	1	1	1	0	0	1	0	0
40	0	0	0	1	0	1	0	0
41	1	0	0	1	0	1	0	0
42	0	1	0	1	0	1	0	0
43	1	1	0	1	0	1	0	0
44	0	0	1	1	0	1	0	0
45	1	0	1	1	0	1	0	0
46	0	1	1	1	0	1	0	0
47	1	1	1	1	0	1	0	0
48	0	0	0	0	1	1	0	0
49	1	0	0	0	1	1	0	0
50	0	1	0	0	1	1	0	0
51	1	1	0	0	1	1	0	0
52	0	0	1	0	1	1	0	0
53	1	0	1	0	1	1	0	0
54	0	1	1	0	1	1	0	0
55	1	1	1	0	1	1	0	0
56	0	0	0	1	1	1	0	0
57	1	0	0	1	1	1	0	0
58	0	1	0	1	1	1	0	0
59	1	1	0	1	1	1	0	0
60	0	0	1	1	1	1	0	0
61	1	0	1	1	1	0	0	0
62	0	1	1	1	1	0	0	0
63	1	1	1	1	1	0	0	0
64	0	0	0	0	0	0	1	0
65	1	0	0	0	0	0	1	0
66	0	1	0	0	0	0	1	0
67	1	1	0	0	0	0	1	0
68	0	0	1	0	0	0	1	0
69	1	0	1	0	0	0	1	0
70	0	1	1	0	0	0	1	0
71	1	1	1	0	0	0	1	0
72	0	0	0	1	0	0	1	0
73	1	0	0	1	0	0	1	0
74	0	1	0	1	0	0	1	0
75	1	1	0	1	0	0	1	0
76	0	0	1	1	0	0	1	0
77	1	0	1	1	0	0	1	0
78	0	1	1	1	0	0	1	0
79	1	1	1	1	0	0	1	0
80	0	0	0	0	1	0	1	0
81	1	0	0	0	1	0	1	0
82	0	1	0	0	1	0	1	0
83	1	1	0	0	1	0	1	0
84	0	0	1	0	1	0	1	0
85	1	0	1	0	1	0	1	0
86	0	1	1	0	1	0	1	0
87	1	1	1	0	1	0	1	0
88	0	0	0	1	1	0	1	0
89	1	0	0	1	1	0	1	0
90	0	1	0	1	1	0	1	0
91	1	1	0	1	1	0	1	0
92	0	0	1	1	1	0	1	0
93	1	0	1	1	1	0	1	0
94	0	1	1	1	1	0	1	0
95	1	1	1	1	1	0	1	0
96	0	0	0	0	1	1	0	1
97	1	0	0	0	0	1	1	0
98	0	1	0	0	0	1	1	0
99	1	1	0	0	0	1	1	0
100	0	0	1	0	0	1	1	0
101	1	0	1	0	0	1	1	0
102	0	1	1	0	0	1	1	0
103	1	1	1	0	0	1	1	0
104	0	0	0	1	0	1	1	0
105	1	0	0	1	0	1	1	0
106	0	1	0	1	0	1	1	0
107	1	1	0	1	0	1	1	0
108	0	0	1	1	0	1	1	0
109	1	0	1	1	0	1	1	0
110	0	1	1	1	0	1	1	0
111	1	1	1	1	0	1	1	0
112	0	0	0	0	1	1	1	0
113	1	0	0	0	1	1	1	0
114	0	1	0	0	1	1	1	0
115	1	1	0	0	1	1	1	0
116	0	0	1	0	1	1	1	0
117	1	0	1	0	1	1	1	0
118	0	1	1	0	1	1	1	0
119	1	1	1	0	1	1	1	0
120	0	0	0	1	1	1	1	0
121	1	0	0	1	1	1	1	0
122	0	1	0	1	1	1	1	0
123	1	1	0	1	1	1	1	0
124	0	0	1	1	1	1	1	0
125	1	0	1	1	1	1	1	0
126	0	1	1	1	1	1	1	0
127	1	1	1	1	1	1	1	0
128	0	0	0	0	0	0	0	1
129	1	0	0	0	0	0	0	1
130	0	1	0	0	0	0	0	1
131	1	1	0	0	0	0	0	1
132	0	0	1	0	0	0	0	1
133	1	0	1	0	0	0	0	1
134	0	1	1	0	0	0	0	1
135	1	1	1	0	0	0	0	1
136	0	0	0	1	0	0	0	1
137	1	0	0	1	0	0	0	1
138	0	1	0	1	0	0	0	1
139	1	1	0	1	0	0	0	1
140	0	0	1	1	0	0	0	1
141	1	0	1	1	0	0	0	1
142	0	1	1	1	0	0	0	1
143	1	1	1	1	0	0	0	1
144	0	0	0	0	1	0	0	1
145	1	0	0	0	1	0	0	1
146	0	1	0	0	1	0	0	1
147	1	1	0	0	1	0	0	1
148	0	0	1	0	1	0	0	1
149	1	0	1	0	1	0	0	1
150	0	1	1	0	1	0	0	1
151	1	1	1	0	1	0	0	1
152	0	0	0	1	1	0	0	1
153	1	0	0	1	1	0	0	1
154	0	1	0	1	1	0	0	1
155	1	1	0	1	1	0	0	1
156	0	0	1	1	1	0	0	1
157	1	0	1	1	1	0	0	1
158	0	1	1	1	1	0	0	1
159	1	1	1	1	1	0	0	1
160	0	0	0	0	0	1	0	1
161	1	0	0	0	0	1	0	1
162	0	1	0	0	0	1	0	1
163	1	1	0	0	0	1	0	1
164	0	0	1	0	0	1	0	1
165	1	0	1	0	0	1	0	1
166	0	1	1	0	0	1	0	1
167	1	1	1	0	0	1	0	1
168	0	0	0	1	0	1	0	1
169	1	0	0	1	0	1	0	1
170	0	1	0	1	0	1	0	1
171	1	1	0	1	0	1	0	1
172	0	0	1	1	0	1	0	1
173	1	0	1	1	0	1	0	1
174	0	1	1	1	0	1	0	1
175	1	1	1	1	0	1	0	1
176	0	0	0	0	1	1	0	1
177	1	0	0	0	1	1	0	1
178	0	1	0	0	1	1	0	1
179	1	1	0	0	1	1	0	1
180	0	0	1	0	1	1	0	1
181	1	0	1	0	1	1	0	1
182	0	1	1	0	1	1	0	1
183	1	1	1	0	1	1	0	1
184	0	0	0	1	1	1	0	1
185	1	0	0	1	1	1	0	1
186	0	1	0	1	1	1	0	1
187	1	1	0	1	1	1	0	1
188	0	0	1	1	1	1	0	1
189	1	0	1	1	1	1	0	1
190	0	1	1	1	1	1	0	1
191	1	1	1	1	1	1	0	1
192	0	0	0	0	0	0	1	1
193	1	0	0	0	0	0	1	1
194	0	1	0	0	0	0	1	1
195	1	1	0	0	0	0	1	1
196	0	0	1	0	0	0	1	1
197	1	0	1	0	0	0	1	1
198	0	1	1	0	0	0	1	1
199	1	1	1	0	0	0	1	1
200	0	0	0	1	0	0	1	1
201	1	0	0	1	0	0		

7. Reliability Condition

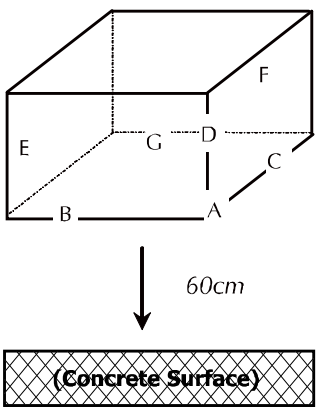
No change on display and in operation under the following test condition.

Condition: Unless otherwise specified, tests will be conducted under the following condition.

Temperature: 20°C±5°C.

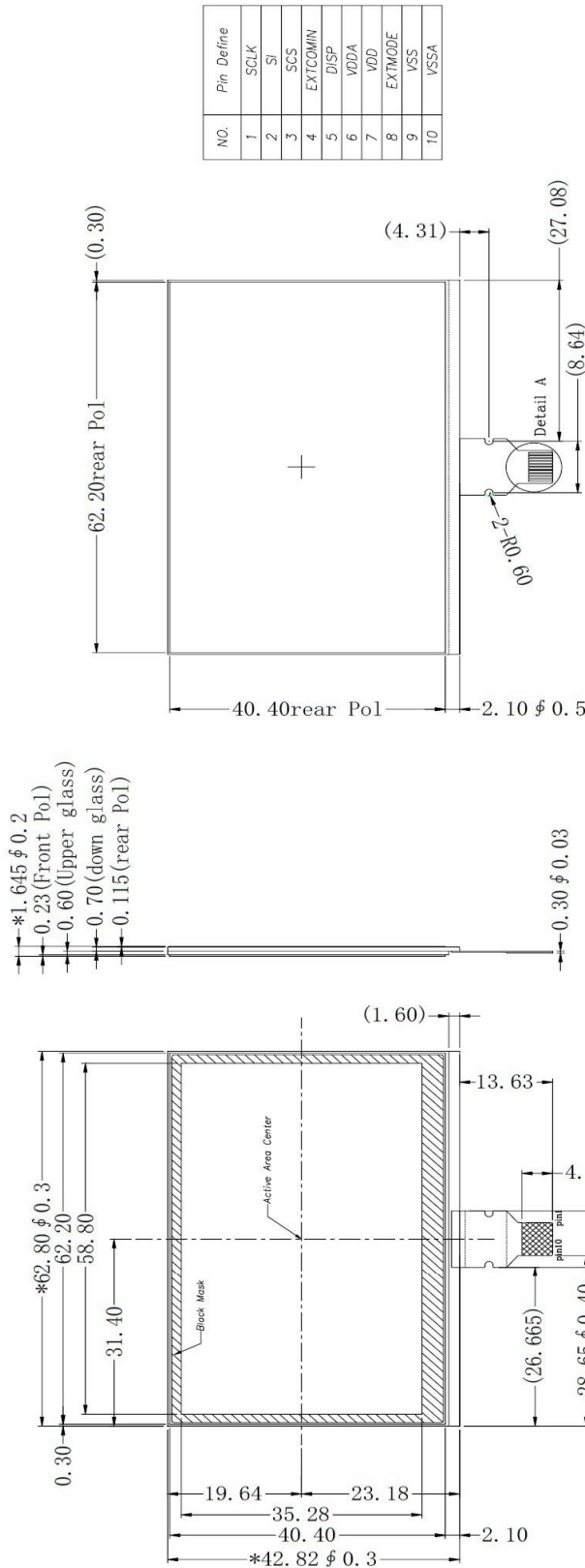
Humidity: 65%±5%RH.

Tests will be not conducted under functioning state.

No.	Parameter	Condition	Notes
1	High Temperature Operating	+70°C±2°C, 240hrs (Operation state).	
2	Low Temperature Operating	-20°C±2°C, 240hrs (Operation state).	1
3	High Temperature Storage	+80°C, 240hrs.	2
4	Low Temperature Storage	-30°C±2°C, 240hrs.	1,2
5	High Temperature and High Humidity Storage Test	40°C±2°C, 95%, 240hrs.	1,2
6	Vibration Test	Total fixed amplitude: 1.5mm. Vibration Frequency: 10~55Hz. One cycle 60 seconds to 3 direction of X, Y, Z each 15 minutes.	3
7.	Drop Test	To be measured after dropping from 60cm high on the concrete surface in packing state.  <i>Dropping method corner dropping:</i> <i>A corner: Once edge dropping.</i> <i>B, C, D edge: Once face dropping.</i> <i>E, F, G face: Once.</i>	

- Notes:
1. No dew condensation to be observed.
  2. The function test shall be conducted after 4 hours storage at the normal temperature and humidity after removed from the test chamber.
  3. Vibration test will be conducted to the product itself without putting I in a container.

8. Dimensional Outlines



- Note:
1. General tolerance : +/- 0.3mm.
  2. "\*" is Critical dimension.
  3. "(" )"reference dimension.
  4. OPERATING TEMP: -20°C~70°C;
  5. STORAGE TEMP: -30°C~80°C.
  6. All RoHS certified.
  7. Recommended Connector: AYF531035 (Panasonic) or FH34SRJ-10-0.5SH(HRS) or equivalent