

Display Elektronik GmbH

*DATA
SHEET*

TFT MODULE

DEM 480854B VMH-PW-N
(C-TOUCH)

(5“ TFT with MIPI Interface+CTP)

Product Specification

Version: 0

07.04.2026

Contents

1. Block Diagram	6
2. Outline Dimension	7
3. Input terminal Pin Assignment	8
3.1 TFT PIN Assignment	8
3.2 CTP PIN Assignment	9
4. LCD Optical Characteristics	10
4.1 Optical specification	10
5.1 Absolute Maximum Rating (Ta=25 VSS=0V)	13
5.2 DC Electrical Characteristics	13
5.3 LED Backlight Characteristics	14
6. MIPI Interface Characteristics	16
6.1 High Speed Mode – Clock Channel Timing	16
6.2 High Speed Mode – Data Clock Channel Timing	17
6.3 High Speed Mode – Rising and Fall Timings	18
6.4 Low Speed Mode – Bus Turn Around	19
6.5 Data Lanes from Low Power Mode to High Speed Mode	20
6.6 Data Lanes from High Power Mode to High Speed Mode	21
6.7 DSI Clock Burst – High Speed Mode to/from Low Power Mode	22
6.8 Timing for DSI video mode	23
6.9 Reset input timing	24
7. CTP Specification	25
7.1. Electrical Characteristics	25
7.1.1 Absolute Maximum Rating	25
7.1.2 DC Electrical Characteristics (Ta=25°C)	25
7.1.3 AC Characteristics	26
7.2 I2C Timing	26
8. LCD Module Out-Going Quality Level	30
8.1 VISUAL & FUNCTION INSPECTION STANDARD	30
8.1.1 Inspection Conditions	30
8.1.2 Definition	30
8.1.3 Sampling Plan	31
8.1.4 Criteria (Visual)	32
9. Reliability Test Result	36
9. Cautions and Handling Precautions	37
9.1 Handling and Operating the Module	37
9.2 Storage and Transportation.	37

DEM 480854B VMH-PW-N(C-TOUCH) *Product Specification*

* Description

This is a color active matrix TFT (Thin Film Transistor) LCD (liquid crystal display) that uses amorphous silicon TFT as a switching device. This model is composed of a Transmissive type TFT-LCD Panel, driver circuit, backlight unit. The resolution of a 5.0" TFT-LCD contains 480x854 pixels, and can display up to 65k / 262k / 16.7Million Colors.

* Features

General Information Items	Specification	Unit	Note
	Main Panel		
Display Area (AA)	61.632 x 109.6536 (5.0Inch)	mm	-
Driver Element	TFT Active Matrix	-	-
Display Colors	65k / 262k / 16.7Million	colors	-
Number of Pixels	480 x (RGB) x 854	dots	-
Pixel Arrangement	RGB Vertical Stripe	-	-
Pixel Pitch	0.1284 x 0.1284	mm	-
Viewing Angle	ALL	o'clock	-
Controller IC	ILI9806E	-	-
LCM Interface	2-Lane MIPI	-	-
Display Mode	Transmissive / Normally Black	-	-
Operating Temperature	-20 ~ +70	°C	-
Storage Temperature	-30 ~ +80	°C	-
Module Bonding Technology	Use Optical bonding between LCM and CTP	-	-

*CTP Features

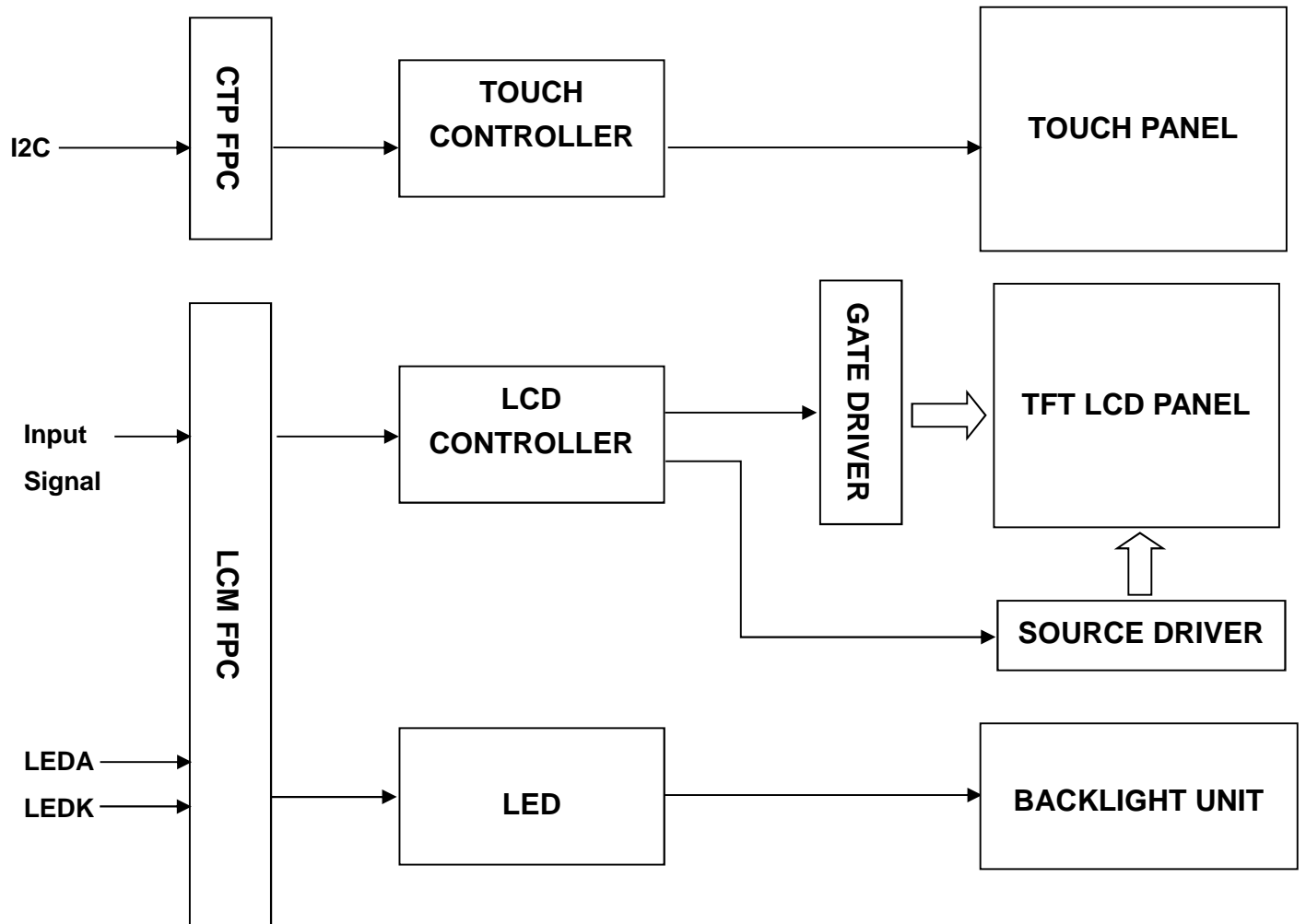
General Information Items	Specification	Unit	Note
	Main Panel		
Resolution	480 x 854	-	-
Structure	G+G	-	-
Controller IC	GT911	-	-
Interface	I2C	-	-
Slave Address	0x5D(7bit) or 0x14(7bit)	-	Note1
Touch Mode	Five Points	-	-
Logic Level	3.3	V	-

DEM 480854B VMH-PW-N(C-TOUCH) *Product Specification*

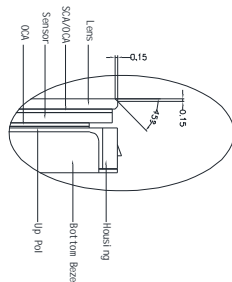
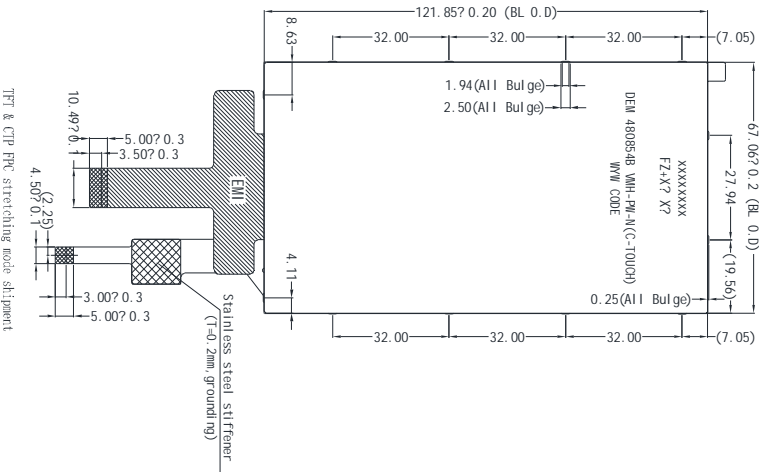
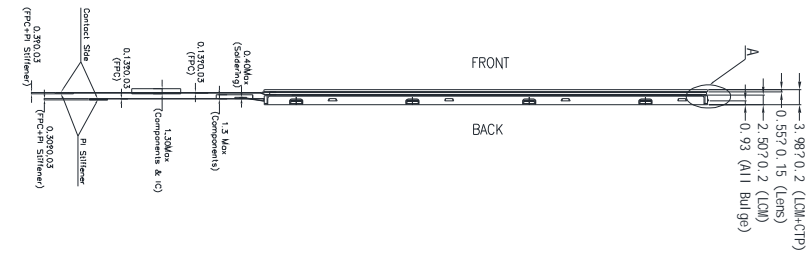
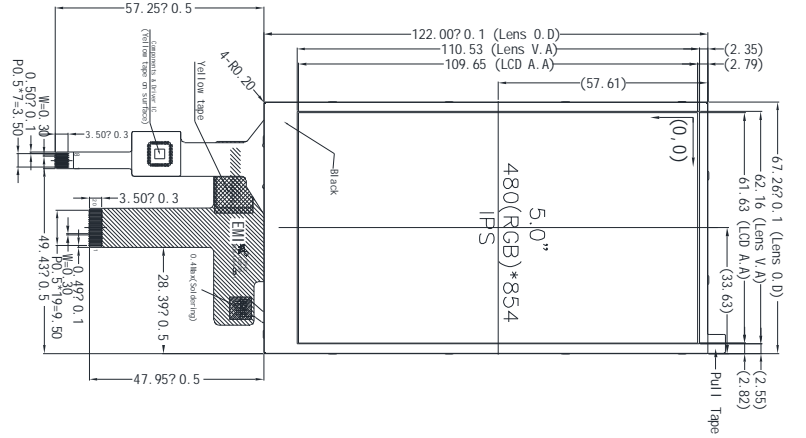
*** Mechanical Information**

Item		Min.	Typ.	Max.	Unit	Note
Module Size	Horizontal(H)	-	67.26	-	mm	-
	Vertical(V)	-	122.00	-	mm	-
	Depth(D)	-	3.98	-	mm	-
Weight		-	t.b.d.	-	g	-

1. Block Diagram

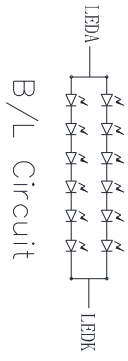


2. Outline Dimension



Detail 1 "A"
Scale: 5/1

- NOTE:
1. DISPLAY TYPE: 5.0" TFT-LCD, 65K/262K/16.7M COLORS
 2. DISPLAY MODE: NORMALLY BLACK/IPS
 3. VIEWING DIRECTION: ALL
 4. LCM DRIVER IC: IL9806E (COG)
 5. LCM Interface: 2-Lane MIPI Interface
 6. Touch Mode: CTP
 7. Touch Driver IC: GT911
 8. Touch Interface: IIC
 9. Touch And LCM Bonding Technology: Optical Bonding
 10. VDD: 3.3V(TYP.), 1.0VCC: 1.65-3.3V
 11. OPERATING TEMP: -20°C TO 70°C
 12. STORAGE TEMP: -30°C TO 80°C
 13. BACK LIGHT: LED WHITE, 12 LED, 40ma, 16.2-20.4V
 14. ROHS COMPLIANT



Pin	Logic
1	GND
2	VDD(0V)
3	VDD
4	SCL
5	SDA
6	IIC
7	RST
8	GND

No.	Pin Name	No.	Pin Name
1	NC	11	MPI_D1P
2	LEDK	12	MPI_D1N
3	NC	13	GND
4	LEDA	14	MPI_CLP
5	NC	15	MPI_CLN
6	VCI	16	GND
7	IOVCC	17	MPI_D0P
8	TE	18	MPI_D0N
9	RESET	19	GND
10	GND	20	GND

3. Input terminal Pin Assignment**3.1 TFT PIN Assignment**

NO.	SYMBOL	DISCRIPTION	I/O
1	NC	No Connection	-
2	LEDK	Cathode pin of backlight.	P
3	NC	No Connection	-
4	LEDA	Anode pin of backlight.	P
5	NC	No Connection	-
6	VCI	Supply Voltage (3.3V).	P
7	IOVCC	I/O power supply voltage.	P
8	TE	-Tearing effect output Leave the pin to open when not in use.	O
9	RESET	- The external reset input. Initializes the chip with a low input. Be sure to execute a power-on reset after supplying power.	I
10	GND	Ground.	P
11	MIPI_D1P	MIPI DSI differential data pair (DSI-Dn+/-).	I/O
12	MIPI_D1N	If MIPI are not used, they should be connected to DGND	I/O
13	GND	Ground.	P
14	MIPI_CLP	MIPI DSI differential clock pair (DSI-CLK+/-).	I
15	MIPI_CLN	If MIPI are not used, they should be connected to DGN D.	I
16	GND	Ground.	P
17	MIPI_D0P	MIPI DSI differential data pair (DSI-Dn+/-).	I/O
18	MIPI_D0N	If MIPI are not used, they should be connected to DGND	I/O
19	GND	Ground.	P
20	GND	Ground.	P

3.2 CTP PIN Assignment

NO.	SYMBOL	DISCRIPTION	I/O
1	GND	Ground	P
2	VDDIO(NC)	No Connection	
3	VDD	Supply voltage	P
4	SCL	I2C clock input	I
5	SDA	I2C data input and output	I
6	INT	External interrupt to the host	I
7	RST	External Reset, Low is active	I
8	GND	Ground	P

4. LCD Optical Characteristics

4.1 Optical Specification

Item		Symbol	Condition	Min.	Typ.	Max.	Unit.	Note		
Contrast Ratio		CR	Θ=0 Normal Viewing Angle	600	800	--		*(1)(2)		
Response Time	Rising	T _R		--	16	21	msec	*(1)(3)		
	Falling	T _F		--	19	24				
Color gamut		S(%)		--	62	--	%	*		
Color Filter Chromaticity	White	W _X		-0.04	0.290	0.322	+0.04	--	*(1) (4) CA-310 Test	
		W _Y								
	Red	R _X								0.642
		R _Y								0.346
	Green	G _X								0.320
		G _Y								0.616
	Blue	B _X	0.142							
		B _Y	0.079							
Viewing Angle	Hor.	Θ _L	--	80	--	--	*(1) (4)			
		Θ _R	--	80	--					
	Ver.	Θ _U	--	80	--					
		Θ _D	--	80	--					
Option View Direction		ALL						--		

*The data comes from the LCD specification.

Measuring Condition

Measuring Surrounding: Dark Room

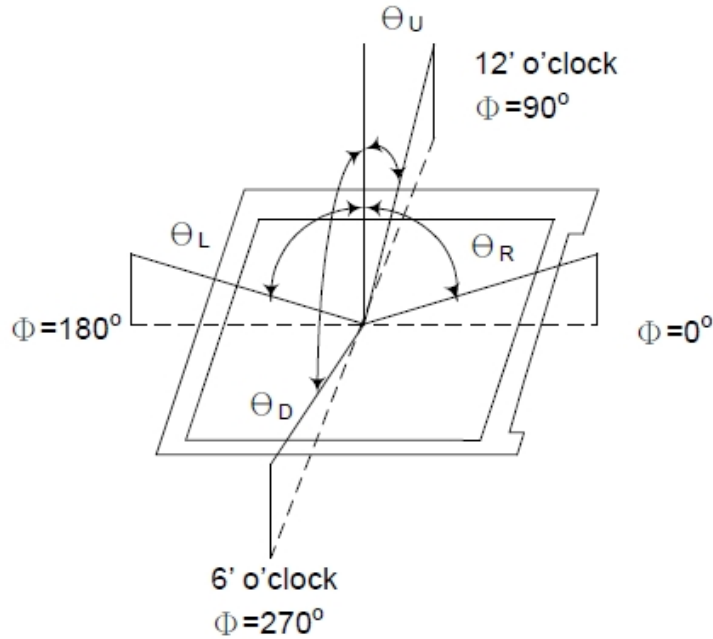
Ambient Temperature: 25°C±2°C

15min. warm-up time.

Measuring Equipment

FPM520 of Westar Display technologies, INC., which utilized SR-3 for Chromaticity and BM-5A for other optical characteristics.

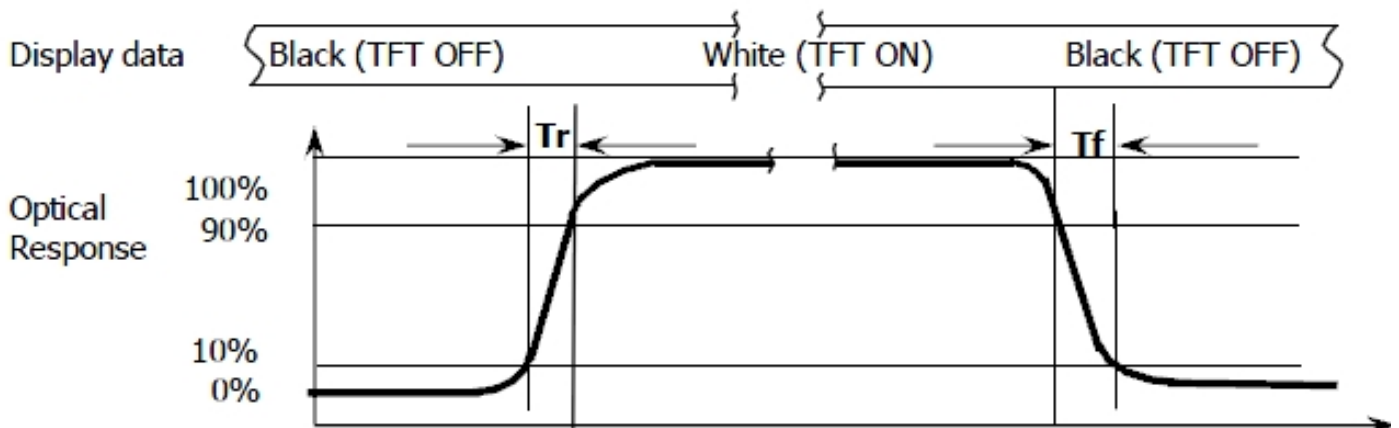
Note (1): Definition of Viewing Angle:



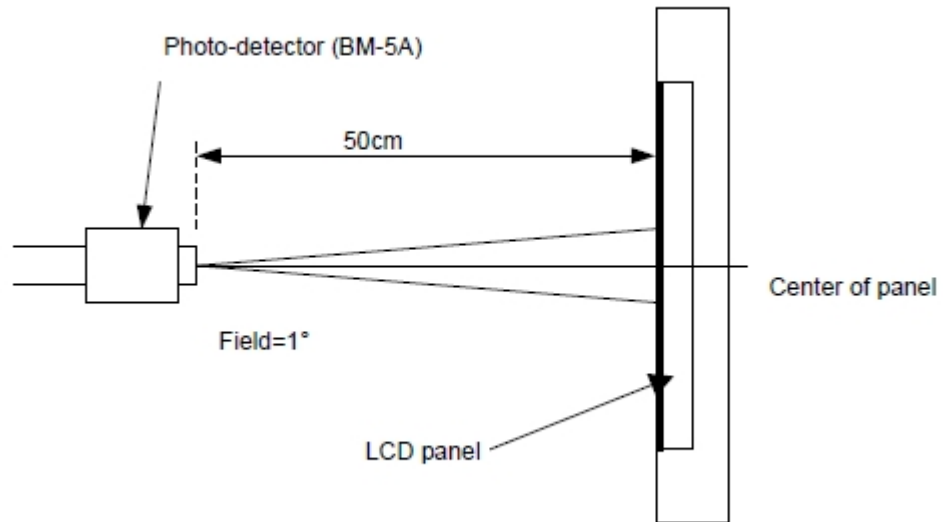
Note (2): Definition of Contrast Ratio (CR): measured at the center point of panel

$$CR = \frac{\text{Luminance with all pixels white}}{\text{Luminance with all pixels black}}$$

Note (3): Response Time



Note (4): Definition of optical measurement setup



5. TFT Electrical Characteristics**5.1 Absolute Maximum Rating (Ta=25 VSS=0V)**

Characteristics	Symbol	Min.	Max.	Unit
Digital Supply Voltage	VCI	-0.3	6.5	V
Digital Interface Supply Voltage	IOVCC	-0.3	3.3	V
Operating Temperature	T _{OP}	-20	+70	°C
Storage Temperature	T _{ST}	-30	+80	°C

NOTE: If the absolute maximum rating of even is one of the above parameters is exceeded even momentarily, the quality of the product may be degraded. Absolute maximum ratings, therefore, specify the values exceeding which the product may be physically damaged. Be sure to use the product within the range of the absolute maximum ratings.

5.2 DC Electrical Characteristics

Characteristics	Symbol	Min.	Typ.	Max.	Unit	Note
Digital Supply Voltage	VCI	2.5	3.3	6.0	V	--
Digital Interface Supply Voltage	IOVCC	1.65	1.8	3.3	V	--
Normal Mode Current consumption	IDD	--	40	80	mA	--
Level Input Voltage	V _{IH}	0.7 IOVCC	--	IOVCC	V	--
	V _{IL}	-0.3	--	0.3 IOVCC	V	--
Level Output Voltage	V _{OH}	0.8* IOVCC	--	IOVCC	V	--
	V _{OL}	GND	--	0.2 IOVCC	V	--

5.3 LED Backlight Characteristics

The Backlight system is edge-lighting type with 12 chips White LED

Item	Symbol	Min.	Typ.	Max.	Unit	Note
Forward Current	I_F	30	40	--	mA	--
Forward Voltage	V_F	--	19.2	--	V	--
LCM Luminance	L_v	310	360	--	cd/m ²	Note3
LED Lifetime	h	50000	--	--	Hour	Note1,2
Uniformity	AVg	80	--	--	%	Note3

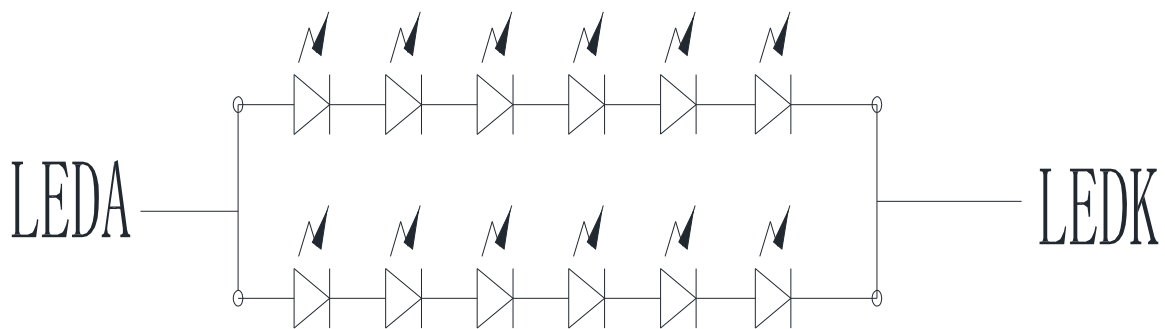
Note (1) LED Lifetime (h) can be defined as the time in which it continues to operate under the condition:

$T_a=25^{\circ}C\pm 3^{\circ}C$, typical IL value indicated in the above table until the brightness becomes less than 50%.

Note (2) The “LED Lifetime” is defined as the module brightness decrease to 50% original brightness

at $T_a=25^{\circ}C$ and $I_L=40mA$. The LED lifetime could be decreased if operating I_L is larger than 40mA.

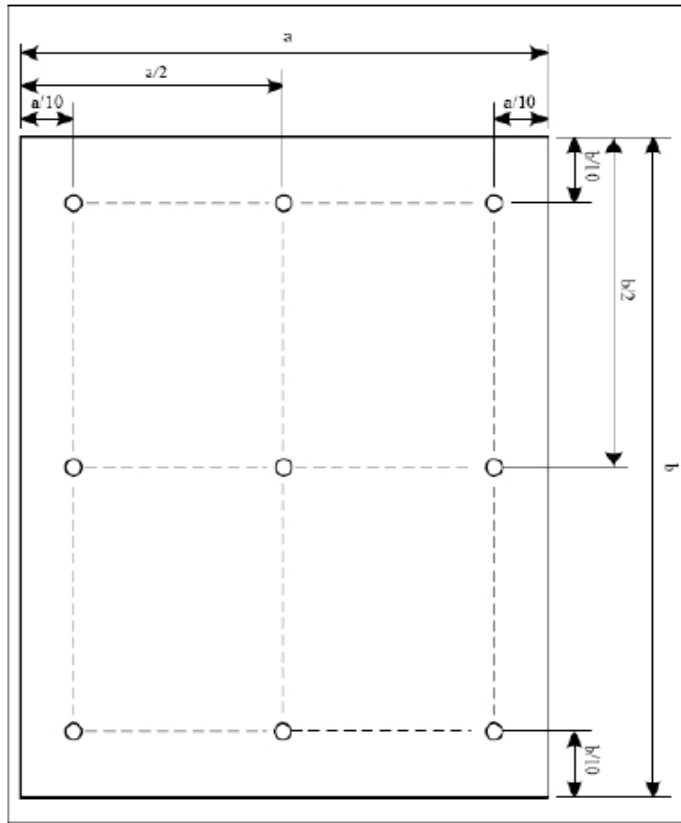
The constant current driving method is suggested.



CIRCUIT DIAGRAM

DEM 480854B VMH-PW-N(C-TOUCH) Product Specification

NOTE 3: Luminance Uniformity of these 9 points is defined as below:



$$\text{Uniformity} = \frac{\text{minimum luminance in 9 points (1-9)}}{\text{maximum luminance in 9 points (1-9)}}$$

$$\text{Luminance} = \frac{\text{Total Luminance of 9 points}}{9}$$

6. MIPI Interface Characteristics

6.1 High Speed Mode – Clock Channel Timing

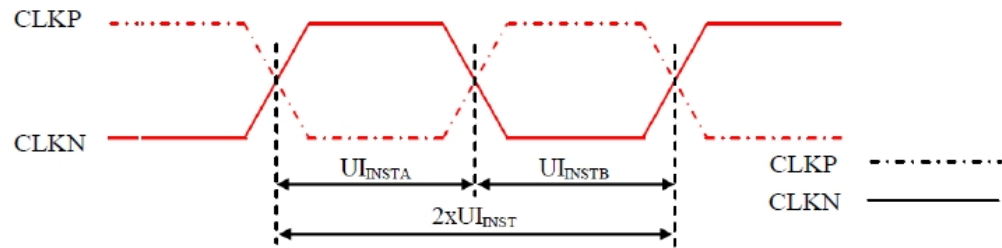


Figure 118: DSI Clock Channel Timing

Table 38: DSI Clock Channel Timing

Signal	Symbol	Parameter	Min	Max	Unit
CLKP/N	$2xUI_{INST}$	Double UI instantaneous	4	25	ns
CLKP/N	UI_{INSTA}, UI_{INSTB} (Note 1)	UI instantaneous Half	2 (Note 2)	12.5	ns

Notes:

1. $UI = UI_{INSTA} = UI_{INSTB}$
2. Define the minimum value of 24 UI per Pixel, see Table 39.

Table 39: Limited Clock Channel Speed

Data type	Two Lanes speed	Three Lanes speed	Four Lanes speed
Data Type = 00 1110 (0Eh), RGB 565, 16 UI per Pixel	566 Mbps	433 Mbps	366 Mbps
Data Type = 01 1110 (1Eh), RGB 666, 18 UI per Pixel	637 Mbps	487 Mbps	412 Mbps
Data Type = 10 1110 (2Eh), RGB 666 Loosely, 24 UI per Pixel	850 Mbps	650 Mbps	550 Mbps
Data Type = 11 1110 (3Eh), RGB 888, 24 UI per Pixel	850 Mbps	650 Mbps	550 Mbps

6.2 High Speed Mode – Data Clock Channel Timing

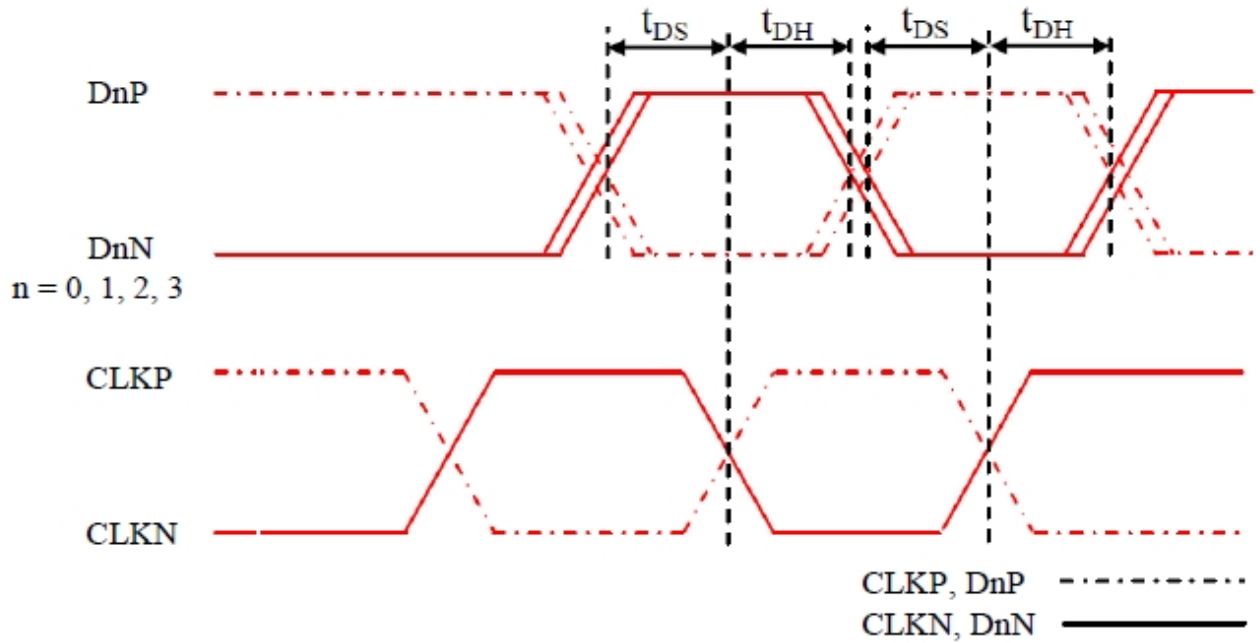


Figure 119: DSI Data to Clock Channel Timings

Table 40: DSI Data to Clock Channel Timings

Signal	Symbol	Parameter	Min	Max
DnP/N , n=0 and 1	t_{DS}	Data to Clock Setup time	0.15xUI	-
	t_{DH}	Clock to Data Hold Time	0.15xUI	-

6.3 High Speed Mode – Rising and Fall Timings

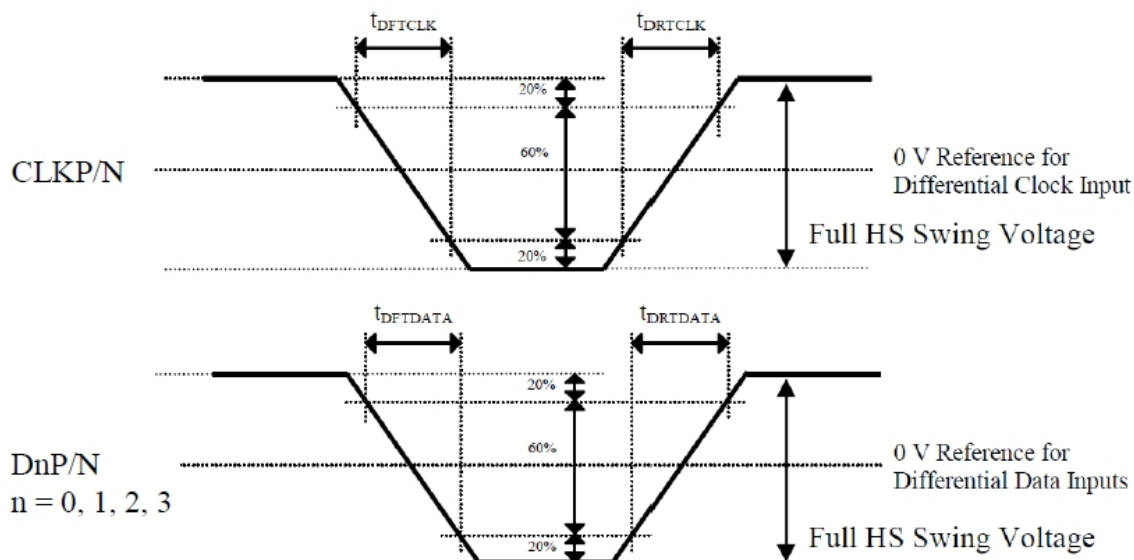


Figure 120: Rising and Falling Timings on Clock and Data Channels

Table 41: Rise and Fall Timings on Clock and Data Channels

Parameter	Symbol	Condition	Specification		
			Min	Typ	Max
Differential Rise Time for Clock	t_{DRTCLK}	CLKP/N	150 ps	-	0.3UI (Note)
Differential Rise Time for Data	$t_{DRTDATA}$	DnP/N n=0 and 1	150 ps	-	0.3UI (Note)
Differential Fall Time for Clock	t_{DFTCLK}	CLKP/N	150 ps	-	0.3UI (Note)
Differential Fall Time for Data	$t_{DFTDATA}$	DnP/N n=0 and 1	150 ps	-	0.3UI (Note)

Note: The display module has to meet timing requirements, which are defined for the transmitter (MCU) on MIPI D-Phy standard.

6.4 Low Speed Mode – Bus Turn Around

Lower Power Mode and its State Periods on the Bus Turnaround (BTA) from the MCU to the Display Module (ILI9881C) are illustrated for reference purposes below.

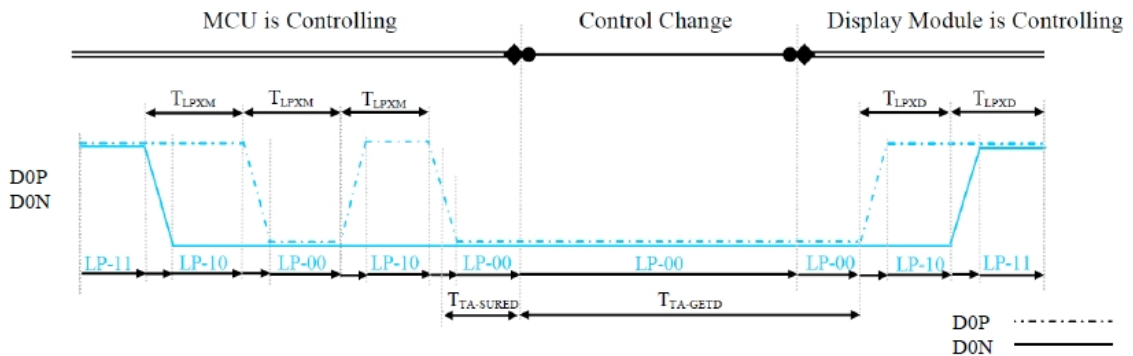


Figure 121: BTA from the MCU to the Display Module

Lower Power Mode and its State Periods on the Bus Turnaround (BTA) from the Display Module (ILI9881C) to the MCU are illustrated for reference purposes below.

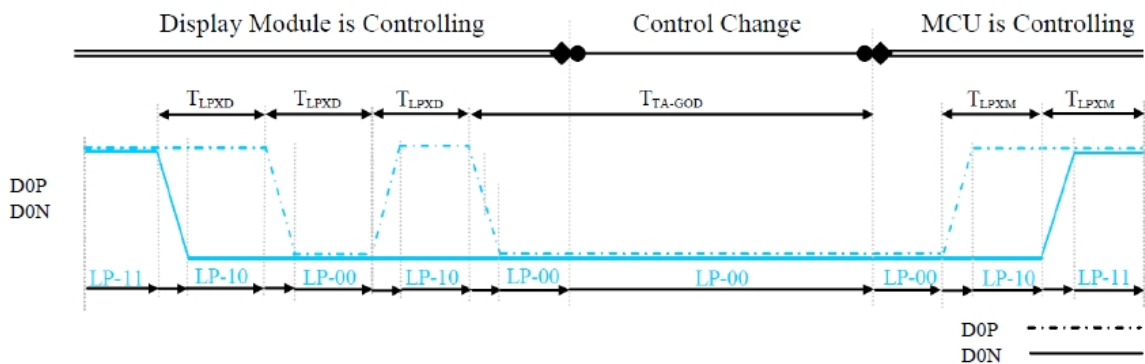


Figure 122: BTA from the Display Module to the MCU

Table 42: Low Power State Period Timings – A

Signal	Symbol	Description	Min	Max	Unit
D0P/N	T_{LPXM}	Length of LP-00, LP-01, LP-10 or LP-11 periods MCU → Display Module (ILI9881C)	50	75	ns
D0P/N	T_{LPXD}	Length of LP-00, LP-01, LP-10 or LP-11 periods Display Module (ILI9881C) → MCU	50	75	ns
D0P/N	$T_{TA-SURED}$	Time-out before the Display Module (ILI9881C) starts driving	T_{LPXD}	$2 \times T_{LPXD}$	ns

Table 43: Low Power State Period Timings – B

Signal	Symbol	Description	Time	Unit
D0P/N	$T_{TA-GETD}$	Time to drive LP-00 by Display Module (ILI9881C)	$5 \times T_{LPXD}$	ns
D0P/N	T_{TA-GOD}	Time to drive LP-00 after turnaround request - MCU	$4 \times T_{LPXD}$	ns

6.5 Data Lanes from Low Power Mode to High Speed Mode

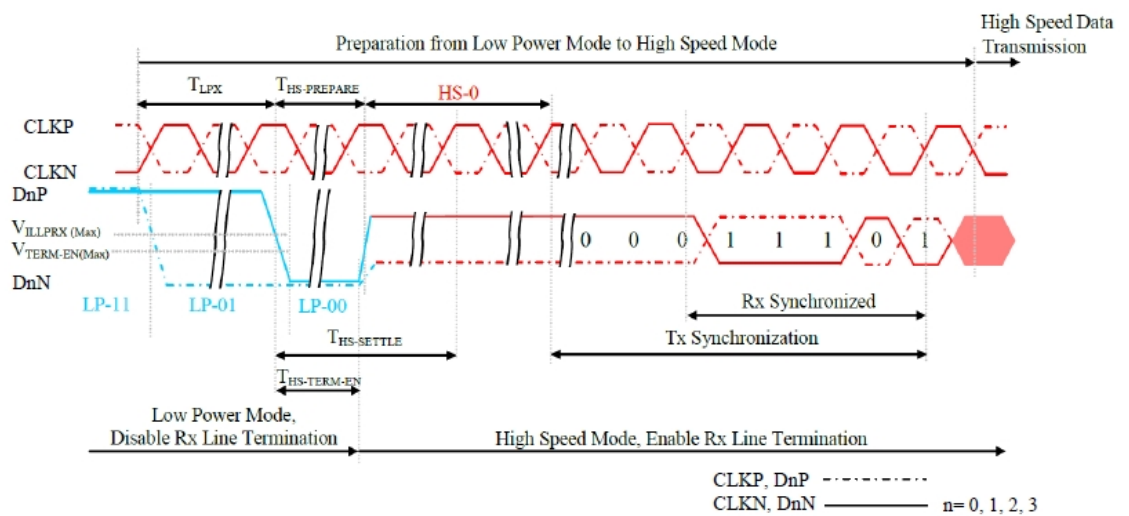


Figure 123: Data Lanes - Low Power Mode to High Speed Mode Timings

Table 44: Data Lanes - Low Power Mode to High Speed Mode Timings

Signal	Symbol	Description	Min	Max	Unit
DnP/N, n = 0 and 1	T_{LPX}	Length of any Low Power State Period	50	-	ns
DnP/N, n = 0 and 1	$T_{HS-PREPARE}$	Time to drive LP-00 to prepare for HS Transmission	$40+4xUI$	$85+6xUI$	ns
DnP/N, n = 0 and 1	$T_{HS-TERM-EN}$	Time to enable Data Lane Receiver line termination measured from when Dn crosses VILMAX	-	$35+4xUI$	ns

6.6 Data Lanes from High Power Mode to High Speed Mode

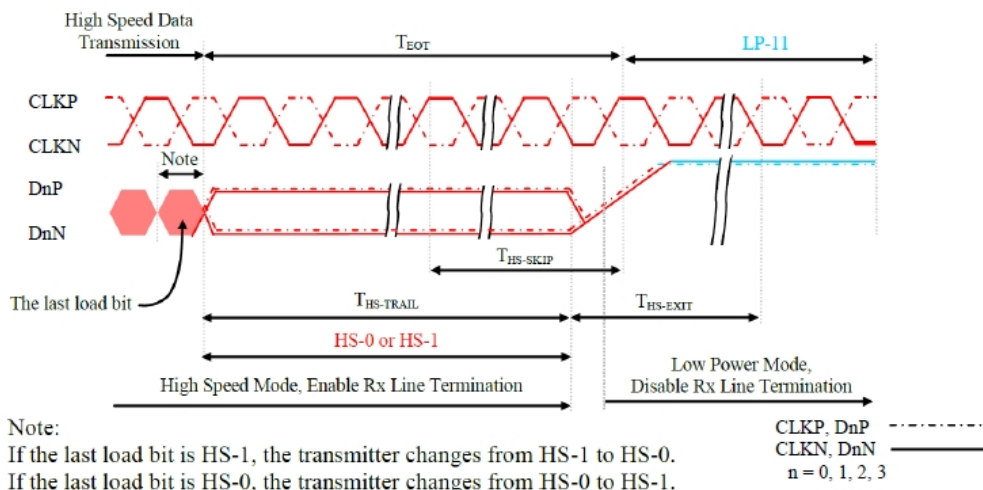


Figure 124: Data Lanes - High Speed Mode to Low Power Mode Timings

Table 45: Data Lanes - High Speed Mode to Low Power Mode Timings

Signal	Symbol	Description	Min	Max	Unit
DnP/N, n = 0 and 1	$T_{HS-SKIP}$	Time-Out at Display Module (ILI9881C) to ignore transition period of EoT	40	55+4xUI	ns
DnP/N, n = 0 and 1	$T_{HS-EXIT}$	Time to driver LP-11 after HS burst	100	-	ns

6.7 DSI Clock Burst – High Speed Mode to/from Low Power Mode

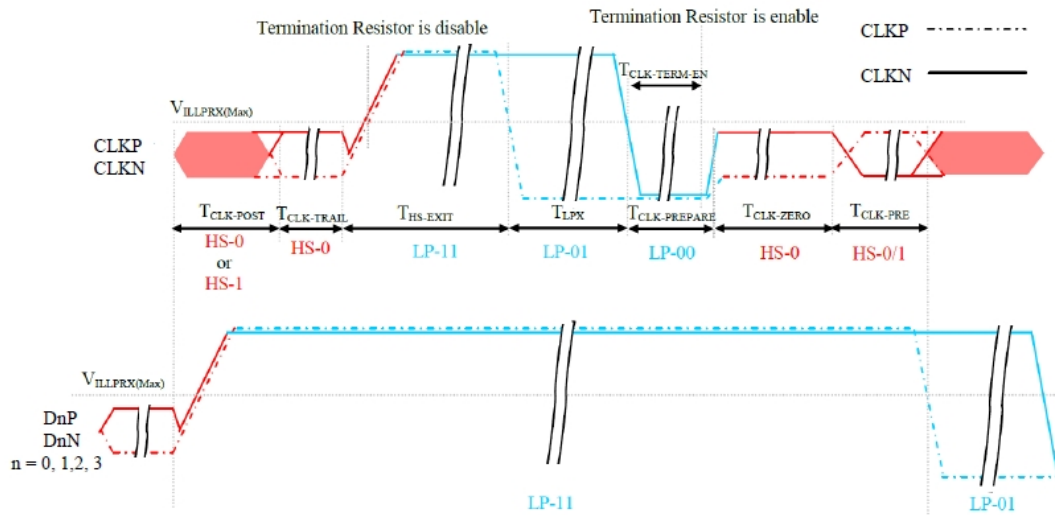


Figure 125: Clock Lanes - High Speed Mode to/from Low Power Mode Timings

Table 46: Clock Lanes - High Speed Mode to/from Low Power Mode Timings

Signal	Symbol	Description	Min	Max	Unit
CLKP/N	$T_{CLK-POST}$	Time that the MCU shall continue sending HS clock after the last associated Data Lanes has transitioned to LP mode	$60+52xUI$	-	ns
CLKP/N	$T_{CLK-TRAIL}$	Time to drive HS differential state after last payload clock bit of a HS transmission burst	60	-	ns
CLKP/N	$T_{HS-EXIT}$	Time to drive LP-11 after HS burst	100	-	ns
CLKP/N	$T_{CLK-PREPARE}$	Time to drive LP-00 to prepare for HS transmission	38	95	ns
CLKP/N	$T_{CLK-TERM-EN}$	Time-out at Clock Lane to enable HS termination	-	38	ns
CLKP/N	$T_{CLK-PREPARE} + T_{CLK-ZERO}$	Minimum lead HS-0 drive period before starting Clock	300	-	ns
CLKP/N	$T_{CLK-PRE}$	Time that the HS clock shall be driven prior to any associated Data Lane beginning the transition from LP to HS mode	$8xUI$	-	ns

6.8 Timing for DSI video mode

Parameter	Symbol	Min.	Typ.	Max.	Unit
DCLK frequency	FCLK	--	(29)	--	MHz
Horizontal display area	HDISP	--	480	--	Clock
Horizontal Sync. Width	hpw	1	4	--	Clock
Horizontal Sync. Back Porch	hbp	1	30	-	Clock
Horizontal Sync. Front Porch	hfp	1	18	--	Clock
Vertical display area	VDISP	--	854	--	Line
Vertical Sync. Width	vs	1	4	--	Line
Vertical Sync. Back Porch	vbp	1	30	--	Line
Vertical Sync. Front Porch	vfp	1	20	--	Line
Frame-Rate		--	60	--	Hz

6.9 Reset input timing

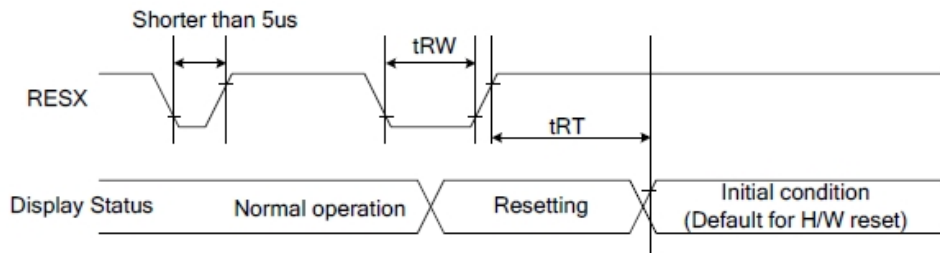


Figure 126: Reset Timing

Table 47: Reset Timing

Signal	Symbol	Parameter	Min	Max	Unit
RESX	tRW	Reset pulse duration	10		uS
	tRT	Reset cancel		5 (note 1,5) 120 (note 1,6,7)	mS

Notes:

1. The reset cancel also includes required time for loading ID bytes, VCOM setting and other settings from EEPROM to registers. This loading is done every time when there is H/W reset cancel time (tRT) within 5 ms after a rising edge of RESX.
2. Spike due to an electrostatic discharge on RESX line does not cause irregular system reset according to the Table 48.

Table 48: Reset Descript

RESX Pulse	Action
Shorter than 5us	Reset Rejected
Longer than 10us	Reset
Between 5us and 10us	Reset starts

3. During the Resetting period, the display will be blanked (The display enters the blanking sequence, which maximum time is 120 ms, when Reset Starts in the Sleep Out mode. The display remains the blank state in the Sleep In mode.) and then return to Default condition for Hardware Reset.
4. Spike Rejection can also be applied during a valid reset pulse, as shown below:

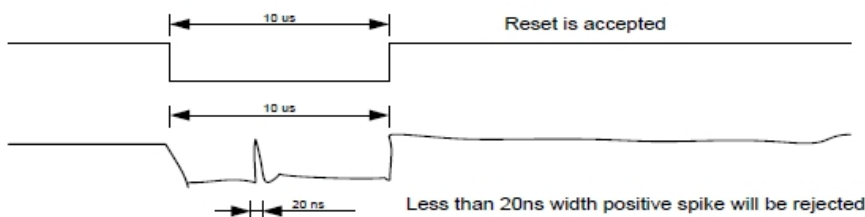


Figure 127: Positive Noise Pulse during Reset Low

5. When Reset applied during Sleep In Mode.
6. When Reset applied during Sleep Out Mode.
7. It is necessary to wait 5msec after releasing RESX before sending commands. Also Sleep Out command cannot be sent for 120msec.

7. CTP Specification**7.1. Electrical Characteristics****7.1.1 Absolute Maximum Rating**

Power Supply Voltage	VDD	2.66	3.47	V	
Operating temperature	T _{OP}	-20	+70	°C	
Storage temperature	T _{ST}	-30	+80	°C	

7.1.2 DC Electrical Characteristics (Ta=25°C)

(Ambient temperature:25°C, VDD=2.8V, VDDIO=1.8V or VDDIO=VDD)

Item	Min.	Typ.	Max.	Unit	Note
Power Supply Voltage/VDD	2.66	3.3	3.47	V	
Normal mode operating current	--	8	14.5	mA	
Green mode operating current	--	3.3	--	mA	
Sleep mode operating current	70	--	120	uA	
Doze mode operating current	--	0.78	--	mA	
Digital Input low voltage/VIL	-0.3	--	0.25*VDD	V	
Digital Input high voltage/VIH	0.75*VDD	--	VDD+0.3	V	
Digital Output low voltage/VOL	--	--	0.15*VDD	V	
Digital Output high voltage/VOH	0.85*VDD	--	--	V	

7.1.3 AC Characteristics

(Ambient temperature: 25°C, VDD=2.8V, VDDIO=1.8V)

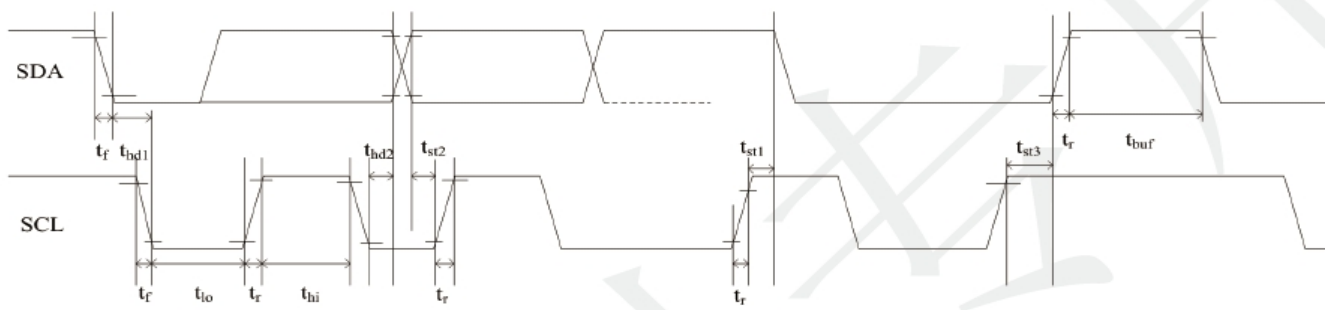
Parameter	Min	Typ	Max	Unit	Note
OSC oscillation frequency	59	60	61	MHZ	
I/O output rise time,low to high	-	14	-	ns	
I/O output rfall time,high to low	-	14	-	ns	

7.2 I2C Timing

GT911 provides a standard I2C interface for SCL and SDA to communicate with the host. GT911

always serves as slave device in the system with all communication being initialized by the host. It is strongly recommended that transmission rate be kept at or below 400Kbps. The I2C timing is

shown below:



Test condition 1: 1.8V host interface voltage, 400Kbps transmission rate, 2K pull-up resistor

Parameter	Symbol	Min.	Max.	Unit
SCL low period	t_{lo}	1.3	-	us
SCL high period	t_{hi}	0.6	-	us
SCL setup time for Start condition	t_{st1}	0.6	-	us
SCL setup time for Stop condition	t_{st3}	0.6	-	us
SCL hold time for Start condition	t_{hd1}	0.6	-	us
SDA setup time	t_{st2}	0.1	-	us
SDA hold time	t_{hd2}	0	-	us

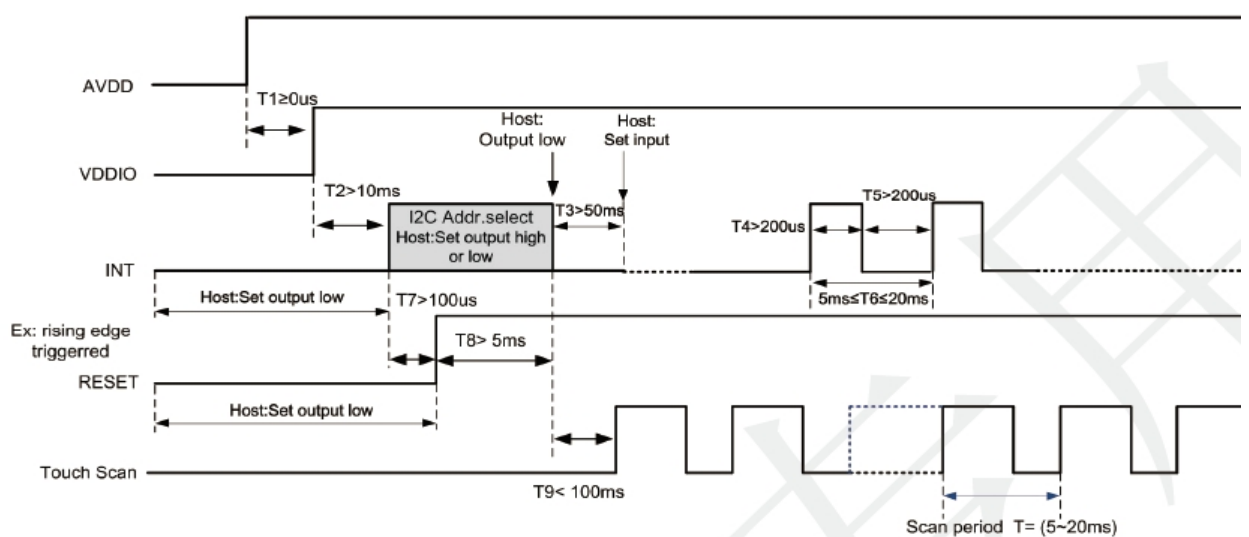
Test condition 2: 3.3V host interface voltage, 400Kbps transmission rate, 2K pull-up resistor

Parameter	Symbol	Min.	Max.	Unit
SCL low period	t_{lo}	1.3	-	us
SCL high period	t_{hi}	0.6	-	us
SCL setup time for Start condition	t_{st1}	0.6	-	us
SCL setup time for Stop condition	t_{st3}	0.6	-	us
SCL hold time for Start condition	t_{hd1}	0.6	-	us
SDA setup time	t_{st2}	0.1	-	us
SDA hold time	t_{hd2}	0	-	us

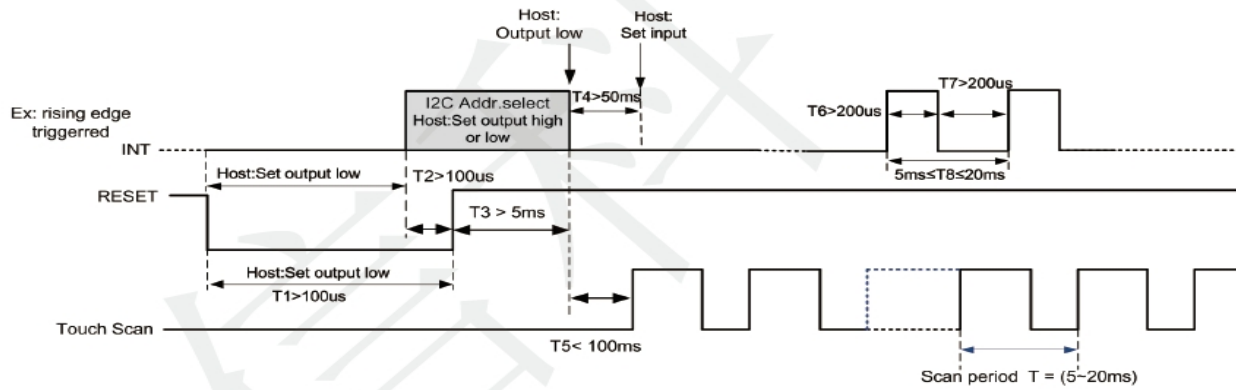
GT911 supports two I2C slave addresses: 0xBA/0xBB and 0x28/0x29. The host can select the address by changing the status of Reset and INT pins during the power-on initialization phase. See

the diagram below for configuration methods and timings:

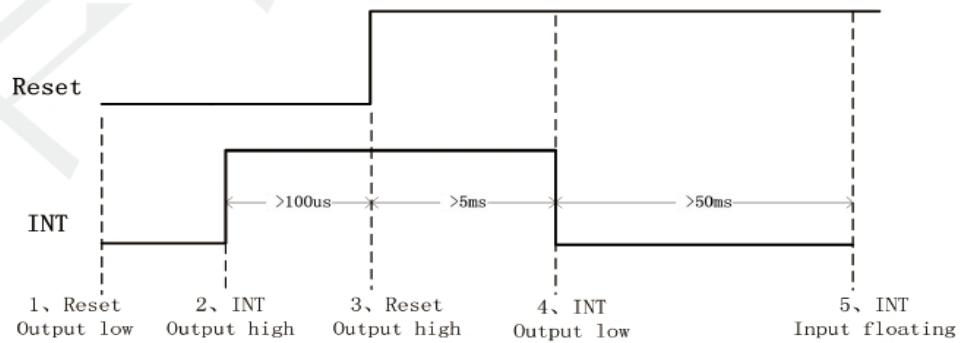
Power-on Timing:



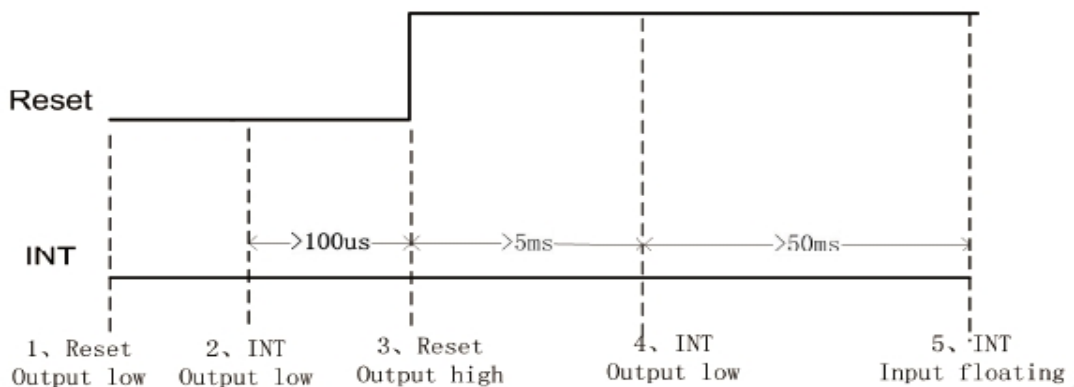
Timing for host resetting GT911:



Timing for setting slave address to 0x28/0x29:



Timing for setting slave address to 0xBA/0xBB:



a) Data Transmission

(For example: device address is 0xBA/0xBB)

Communication is always initiated by the host. Valid Start condition is signaled by pulling SDA line from “high” to “low” when SCL line is “high”. Data flow or address is transmitted after the Start condition.

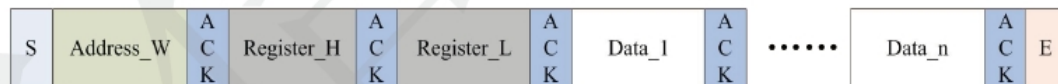
All slave devices connected to I²C bus should detect the 8-bit address issued after Start condition and send the correct ACK. After receiving matching address, GT911 acknowledges by configuring SDA line as output port and pulling SDA line low during the ninth SCL cycle. When receiving unmatched address, namely, not 0xBA or 0xBB, GT911 will stay in an idle state.

For data bytes on SDA, each of 9 serial bits will be sent on nine SCL cycles. Each data byte consists of 8 valid data bits and one ACK or NACK bit sent by the recipient. The data transmission is valid when SCL line is “high”.

When communication is completed, the host will issue the STOP condition. Stop condition implies the transition of SDA line from “low” to “high” when SCL line is “high”.

b) Writing Data to GT911

(For example: device address is 0xBA/0xBB)



Timing for Write Operation

The diagram above displays the timing sequence of the host writing data onto GT911. First, the host issues a Start condition. Then, the host sends 0xBA (address bits and R/W bit; R/W bit as 0 indicates Write operation) to the slave device.

After receiving ACK, the host sends the 16-bit register address (where writing starts) and the 8-bit data bytes (to be written onto the register).

The location of the register address pointer will automatically add 1 after every Write Operation. Therefore, when the host needs to perform Write Operations on a group of registers of continuous addresses, it is able to write continuously. The Write Operation is terminated when the host issues the Stop condition.

8. LCD Module Out-Going Quality Level

8.1 VISUAL & FUNCTION INSPECTION STANDARD

8.1.1 Inspection Conditions

Inspection performed under the following conditions is recommended.

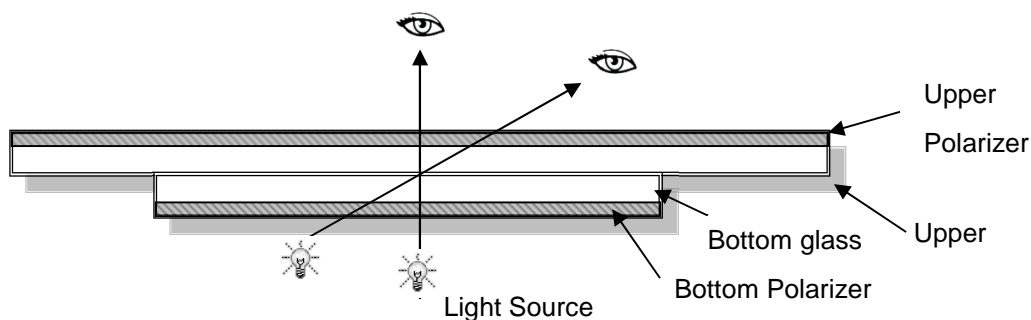
Temperature: 25°C±5°C

Humidity: 65%±10%RH

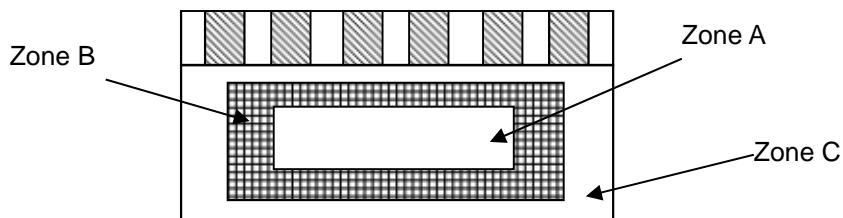
Viewing Angle: Normal Viewing Angle.

Illumination: Single fluorescent lamp (300 to 700Lux)

Viewing distance: 30-50cm



8.1.2 Definition



Zone A: Effective Viewing Area (Character or Digit can be seen)

Zone B: Viewing Area except Zone A

Zone C: Outside (Zone A+Zone B) which can not be seen after assembly by customer)

Note: As a general rule, visual defects in Zone C can be ignored when it doesn't effect product function or appearance after assembly by customer.

8.1.3 Sampling Plan

According to GB/T 2828-2003; Normal Inspection, Class II

AQL:

Major Defect	Minor Defect
0.65	1.5

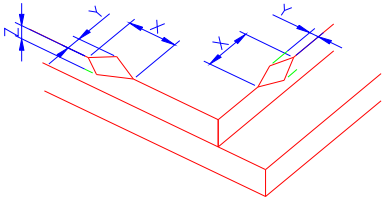
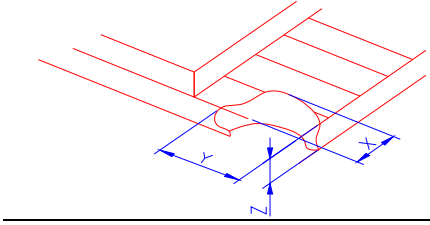
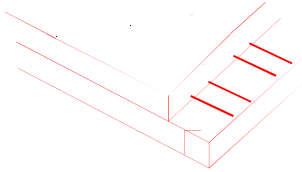
LCD: Liquid Crystal Display, LCM: Liquid Crystal Module, CTP: Capacitive Touch Panel

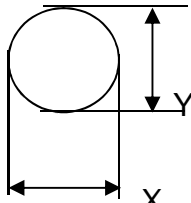
No	Items to be inspected	Criteria	Classification of defects
1	Functional defects	1) No display, Open or miss line 2) Display abnormally, Short 3) Backlight no lighting, abnormal lighting. etc	Major
2	Missing	Missing components and etc	
3	Outline dimension	Overall outline dimension beyond the drawing is not allowed, deformation and etc	
4	Color tone	Color unevenness, refer to limited sample	Minor
5	Spot/Line defect	Light dot, Dim spot, (Note1) Polarizer Air Bubble, Polarizer accidented spot and etc	
6	Soldering appearance	Good soldering , Peeling off is not allowed and etc	
7	LCD/Polarizer	Black/White spot/line, scratch, crack, etc.	


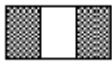
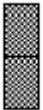
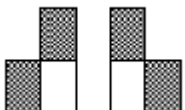
Note1: a) Light dot: Dots appear bright and unchanged in size in which LCD panel is displaying under black pattern.

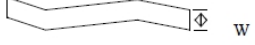
b) Dim dot: Dots appear dark and unchanged in size in which LCD panel is displaying under pure red, green, blue picture.

8.1.4 Criteria (Visual)

Number	Items	Criteria(mm)						
1.0 LCD Crack/Broken NOTE: X: Length Y: Width Z: Height L: Length of ITO, T: Height of LCD	(1) The edge of LCD broken	 <table border="1" data-bbox="751 613 1452 763"> <thead> <tr> <th>X</th> <th>Y</th> <th>Z</th> </tr> </thead> <tbody> <tr> <td>≤3.0mm</td> <td><Inner border line of the seal</td> <td>≤T</td> </tr> </tbody> </table>	X	Y	Z	≤3.0mm	<Inner border line of the seal	≤T
	X	Y	Z					
	≤3.0mm	<Inner border line of the seal	≤T					
(2) LCD corner broken	 <table border="1" data-bbox="831 1070 1372 1171"> <thead> <tr> <th>X</th> <th>Y</th> <th>Z</th> </tr> </thead> <tbody> <tr> <td>≤3.0mm</td> <td>≤L</td> <td>≤T</td> </tr> </tbody> </table>	X	Y	Z	≤3.0mm	≤L	≤T	
X	Y	Z						
≤3.0mm	≤L	≤T						
(3) LCD crack	 <p style="text-align: center;">Crack Not allowed</p>							

2.0	Spot defect	① light dot (black/white spot , pinhole, stain, etc.)																												
		<table border="1" style="width: 100%; border-collapse: collapse;"> <thead> <tr> <th rowspan="2" style="text-align: center;">Zone Size (mm)</th> <th colspan="3" style="text-align: center;">Acceptable Qty</th> </tr> <tr> <th style="text-align: center;">A</th> <th style="text-align: center;">B</th> <th style="text-align: center;">C</th> </tr> </thead> <tbody> <tr> <td style="text-align: center;">$\Phi \leq 0.15$</td> <td colspan="3" style="text-align: center;">Ignore</td> </tr> <tr> <td style="text-align: center;">$0.15 < \Phi \leq 0.25$</td> <td colspan="3" rowspan="2" style="text-align: center;">Ignore</td> </tr> <tr> <td style="text-align: center;">$0.25 < \Phi \leq 0.4$</td> <td colspan="2" style="text-align: center;">3(distance ≥ 10mm)</td> </tr> <tr> <td style="text-align: center;">$\Phi > 0.4$</td> <td colspan="3" style="text-align: center;">2(distance ≥ 10mm)</td> </tr> <tr> <td style="text-align: center;">$\Phi > 0.4$</td> <td colspan="3" style="text-align: center;">0</td> </tr> </tbody> </table>			Zone Size (mm)	Acceptable Qty			A	B	C	$\Phi \leq 0.15$	Ignore			$0.15 < \Phi \leq 0.25$	Ignore			$0.25 < \Phi \leq 0.4$	3(distance ≥ 10 mm)		$\Phi > 0.4$	2(distance ≥ 10 mm)			$\Phi > 0.4$	0		
	Zone Size (mm)	Acceptable Qty																												
		A	B	C																										
	$\Phi \leq 0.15$	Ignore																												
$0.15 < \Phi \leq 0.25$	Ignore																													
$0.25 < \Phi \leq 0.4$				3(distance ≥ 10 mm)																										
$\Phi > 0.4$	2(distance ≥ 10 mm)																													
$\Phi > 0.4$	0																													
$\Phi = (X+Y)/2$	② Dim spot (light leakage, dent, dark spot, etc)																													
	<table border="1" style="width: 100%; border-collapse: collapse;"> <thead> <tr> <th rowspan="2" style="text-align: center;">Zone Size (mm)</th> <th colspan="3" style="text-align: center;">Acceptable Qty</th> </tr> <tr> <th style="text-align: center;">A</th> <th style="text-align: center;">B</th> <th style="text-align: center;">C</th> </tr> </thead> <tbody> <tr> <td style="text-align: center;">$\Phi \leq 0.15$</td> <td colspan="3" style="text-align: center;">Ignore</td> </tr> <tr> <td style="text-align: center;">$0.15 < \Phi \leq 0.25$</td> <td colspan="3" rowspan="2" style="text-align: center;">Ignore</td> </tr> <tr> <td style="text-align: center;">$0.25 < \Phi \leq 0.4$</td> <td colspan="2" style="text-align: center;">3(distance ≥ 10mm)</td> </tr> <tr> <td style="text-align: center;">$\Phi > 0.4$</td> <td colspan="3" style="text-align: center;">2(distance ≥ 10mm)</td> </tr> <tr> <td style="text-align: center;">$\Phi > 0.4$</td> <td colspan="3" style="text-align: center;">0</td> </tr> </tbody> </table>	Zone Size (mm)	Acceptable Qty			A	B	C	$\Phi \leq 0.15$	Ignore			$0.15 < \Phi \leq 0.25$	Ignore			$0.25 < \Phi \leq 0.4$	3(distance ≥ 10 mm)		$\Phi > 0.4$	2(distance ≥ 10 mm)			$\Phi > 0.4$	0			③ Polarizer accidented spot		
Zone Size (mm)	Acceptable Qty																													
	A	B	C																											
$\Phi \leq 0.15$	Ignore																													
$0.15 < \Phi \leq 0.25$	Ignore																													
$0.25 < \Phi \leq 0.4$				3(distance ≥ 10 mm)																										
$\Phi > 0.4$	2(distance ≥ 10 mm)																													
$\Phi > 0.4$	0																													
	<table border="1" style="width: 100%; border-collapse: collapse;"> <thead> <tr> <th rowspan="2" style="text-align: center;">Zone Size (mm)</th> <th colspan="3" style="text-align: center;">Acceptable Qty</th> </tr> <tr> <th style="text-align: center;">A</th> <th style="text-align: center;">B</th> <th style="text-align: center;">C</th> </tr> </thead> <tbody> <tr> <td style="text-align: center;">$\Phi \leq 0.2$</td> <td colspan="3" style="text-align: center;">Ignore</td> </tr> <tr> <td style="text-align: center;">$0.2 < \Phi \leq 0.5$</td> <td colspan="2" style="text-align: center;">2(distance ≥ 10mm)</td> <td rowspan="2" style="text-align: center;">Ignore</td> </tr> <tr> <td style="text-align: center;">$\Phi > 0.5$</td> <td colspan="2" style="text-align: center;">0</td> </tr> </tbody> </table>	Zone Size (mm)	Acceptable Qty			A	B	C	$\Phi \leq 0.2$	Ignore			$0.2 < \Phi \leq 0.5$	2(distance ≥ 10 mm)		Ignore	$\Phi > 0.5$	0		④ Polarizer Bubble										
Zone Size (mm)	Acceptable Qty																													
	A	B	C																											
$\Phi \leq 0.2$	Ignore																													
$0.2 < \Phi \leq 0.5$	2(distance ≥ 10 mm)		Ignore																											
$\Phi > 0.5$	0																													
	<table border="1" style="width: 100%; border-collapse: collapse;"> <thead> <tr> <th rowspan="2" style="text-align: center;">Zone Size (mm)</th> <th colspan="3" style="text-align: center;">Acceptable Qty</th> </tr> <tr> <th style="text-align: center;">A</th> <th style="text-align: center;">B</th> <th style="text-align: center;">C</th> </tr> </thead> <tbody> <tr> <td style="text-align: center;">$\Phi \leq 0.2$</td> <td colspan="3" style="text-align: center;">Ignore</td> </tr> <tr> <td style="text-align: center;">$0.2 < \Phi \leq 0.4$</td> <td colspan="2" style="text-align: center;">2(distance ≥ 10mm)</td> <td rowspan="2" style="text-align: center;">Ignore</td> </tr> <tr> <td style="text-align: center;">$\Phi > 0.4$</td> <td colspan="2" style="text-align: center;">0</td> </tr> </tbody> </table>	Zone Size (mm)	Acceptable Qty			A	B	C	$\Phi \leq 0.2$	Ignore			$0.2 < \Phi \leq 0.4$	2(distance ≥ 10 mm)		Ignore	$\Phi > 0.4$	0												
Zone Size (mm)	Acceptable Qty																													
	A	B	C																											
$\Phi \leq 0.2$	Ignore																													
$0.2 < \Phi \leq 0.4$	2(distance ≥ 10 mm)		Ignore																											
$\Phi > 0.4$	0																													

3.0	LCD Pixel defect	<p>Pixel bad points</p> <table border="1"> <thead> <tr> <th data-bbox="523 255 715 309">Item</th> <th data-bbox="715 255 1230 309">Zone A</th> <th data-bbox="1230 255 1481 309">Acceptable Qty</th> </tr> </thead> <tbody> <tr> <td data-bbox="523 309 715 468" rowspan="3">Bright dot</td> <td data-bbox="715 309 1230 365">Random</td> <td data-bbox="1230 309 1481 365">N≤2</td> </tr> <tr> <td data-bbox="715 365 1230 421">2 dots adjacent</td> <td data-bbox="1230 365 1481 421">N≤0</td> </tr> <tr> <td data-bbox="715 421 1230 477">3 dots adjacent</td> <td data-bbox="1230 421 1481 477">N≤0</td> </tr> <tr> <td data-bbox="523 477 715 636" rowspan="3">Dark dot</td> <td data-bbox="715 477 1230 533">Random</td> <td data-bbox="1230 477 1481 533">N≤3</td> </tr> <tr> <td data-bbox="715 533 1230 589">2 dots adjacent</td> <td data-bbox="1230 533 1481 589">N≤0</td> </tr> <tr> <td data-bbox="715 589 1230 636">3 dots adjacent</td> <td data-bbox="1230 589 1481 636">N≤0</td> </tr> <tr> <td data-bbox="523 636 715 947">Distance</td> <td data-bbox="715 636 1230 947"> 1. Minimum Distance Between Bright dots. 2. Minimum Distance Between dark dots 3. Minimum Distance Between dark and bright dot. </td> <td data-bbox="1230 636 1481 947">5mm</td> </tr> <tr> <td colspan="2" data-bbox="523 947 1230 1003">Total bright and dark dot</td> <td data-bbox="1230 947 1481 1003">N≤4</td> </tr> </tbody> </table> <p>Note:</p> <p>A) Bright dot: Dots appear bright and unchanged in size in which LCD panel is displaying under black pattern.</p> <p>B) Dark dot: Dots appear dark and unchanged in size in which LCD panel is displaying under pure red, green, blue picture.</p> <p>C) 2 dot adjacent = 1 pair = 2 dots</p> <p>Picture:</p> <div style="display: flex; justify-content: space-around; align-items: flex-start;"> <div style="text-align: center;">  <p>2 dot adjacent</p> </div> <div style="text-align: center;">  <p>2 dot adjacent</p> </div> <div style="text-align: center;">  <p>2 dot adjacent (vertical)</p> </div> <div style="text-align: center;">  <p>2 dot adjacent (slant)</p> </div> </div>	Item	Zone A	Acceptable Qty	Bright dot	Random	N≤2	2 dots adjacent	N≤0	3 dots adjacent	N≤0	Dark dot	Random	N≤3	2 dots adjacent	N≤0	3 dots adjacent	N≤0	Distance	1. Minimum Distance Between Bright dots. 2. Minimum Distance Between dark dots 3. Minimum Distance Between dark and bright dot.	5mm	Total bright and dark dot		N≤4
Item	Zone A	Acceptable Qty																							
Bright dot	Random	N≤2																							
	2 dots adjacent	N≤0																							
	3 dots adjacent	N≤0																							
Dark dot	Random	N≤3																							
	2 dots adjacent	N≤0																							
	3 dots adjacent	N≤0																							
Distance	1. Minimum Distance Between Bright dots. 2. Minimum Distance Between dark dots 3. Minimum Distance Between dark and bright dot.	5mm																							
Total bright and dark dot		N≤4																							

4.0	Line defect (LCD /Polarizer backlight black/white line, scratch, stain)  W: width, L : length N : Count	<table border="1"> <thead> <tr> <th rowspan="2">Width(mm)</th> <th rowspan="2">Length(mm)</th> <th colspan="3">Acceptable Qty</th> </tr> <tr> <th>A</th> <th>B</th> <th>C</th> </tr> </thead> <tbody> <tr> <td>$\Phi \leq 0.05$</td> <td>Ignore</td> <td colspan="2">Ignore</td> <td rowspan="3">Ignore</td> </tr> <tr> <td>$0.05 < W \leq 0.06$</td> <td>$L \leq 5.0$</td> <td colspan="2">$N \leq 3$</td> </tr> <tr> <td>$0.06 < W \leq 0.08$</td> <td>$L \leq 4.0$</td> <td colspan="2">$N \leq 2$</td> </tr> <tr> <td>$W > 0.08$</td> <td colspan="4">Define as spot defect</td> </tr> </tbody> </table>	Width(mm)	Length(mm)	Acceptable Qty			A	B	C	$\Phi \leq 0.05$	Ignore	Ignore		Ignore	$0.05 < W \leq 0.06$	$L \leq 5.0$	$N \leq 3$		$0.06 < W \leq 0.08$	$L \leq 4.0$	$N \leq 2$		$W > 0.08$	Define as spot defect			
		Width(mm)			Length(mm)	Acceptable Qty																						
			A	B		C																						
		$\Phi \leq 0.05$	Ignore	Ignore		Ignore																						
		$0.05 < W \leq 0.06$	$L \leq 5.0$	$N \leq 3$																								
$0.06 < W \leq 0.08$	$L \leq 4.0$	$N \leq 2$																										
$W > 0.08$	Define as spot defect																											
5.0	Electronic Components SMT.	Not allow missing parts, solderless connection, cold solder joint, mismatch, The positive and negative polarity opposite																										
6.0	Display color & Brightness.	1. Color: Measuring the color coordinates, The measurement standard according to the datasheet or samples. 2. Brightness: Measuring the brightness of White screen, The measurement standard according to the datasheet or Samples.																										
7.0	LCD Mura/Waving/ Hot spot	Not visible through 5% ND filter in 50% gray or judge by limit sample if necessary.																										

Criteria (functional items)

Number	Items	Criteria (mm)
1	No display	Not allowed
2	Missing segment	Not allowed
3	Short	Not allowed
4	Backlight no lighting	Not allowed
5	CTP no function	Not allowed

9. Reliability Test Result

Item	Condition	Inspection after test
High Temperature	70°C,96h	Inspection after 2~4hours storage at room temperature, the sample shall be free from defects: 1. Air bubble in the LCD; 2. Non-display; 3. Missing segments/line; 4. Glass crack; 5. Current IDD is twice higher than initial value.
Low Temperature Operating	-20°C, 96h	
High Temperature Storage	80°C, 96h	
Low Temperature Storage	-30°C, 96h	
High Temperature & High Humidity Operating	+60°C, 90% RH ,96h	
Thermal Shock (Non-operation)	-20°C, 30 min ↔ +70°C, 30 min, Change time: 5min 20CYC.	
ESD Test	C=150pF, R=330,5points/panel Air:±8kV, 5times; Contact:±6kV, 5 times; (Environment: 15°C~35°C, 30%~60%).	
Vibration (Non-operation)	Frequency range: 10~55Hz, Stroke:1.5mm Sweep:10Hz~55Hz~10Hz 2 hours for each direction of X.Y.Z. (6 hours for total) (Package condition).	
Box Drop Test	1 Corner 3 Edges 6 faces,80cm(MEDIUM BOX)	

Remark:

1. The test samples should be applied to only one test item.
2. Sample size for each test item is 5~10pcs.
3. For Damp Proof Test, Pure water (Resistance > 10MΩ) should be used.
4. In case of malfunction defect caused by ESD damage, if it would be recovered to normal state after resetting, it would be judged as a good part.
5. Failure Judgment Criterion: Basic Specification, Electrical Characteristic, Mechanical Characteristic, Optical Characteristic.
6. The color fading mura of polarizing filter should not care.

9. Cautions and Handling Precautions

9.1 Handling and Operating the Module

- (1) When the module is assembled, it should be attached to the system firmly.
Do not warp or twist the module during assembly work.
- (2) Protect the module from physical shock or any force. In addition to damage, this may cause improper operation or damage to the module and back-light unit.
- (3) Note that polarizer is very fragile and could be easily damaged. Do not press or scratch the surface.
- (4) Do not allow drops of water or chemicals to remain on the display surface.
If you have the droplets for a long time, staining and discoloration may occur.
- (5) If the surface of the polarizer is dirty, clean it using some absorbent cotton or soft cloth.
- (6) The desirable cleaners are water, IPA (Isopropyl Alcohol) or Hexane.
Do not use ketene type materials (ex. Acetone), Ethyl alcohol, Toluene, Ethyl acid or Methyl chloride. It might permanent damage to the polarizer due to chemical reaction.
- (7) If the liquid crystal material leaks from the panel, it should be kept away from the eyes or mouth. In case of contact with hands, legs, or clothes, it must be washed away thoroughly with soap.
- (8) Protect the module from static; it may cause damage to the CMOS ICs.
- (9) Use finger-stalls with soft gloves in order to keep display clean during the incoming inspection and assembly process.
- (10) Do not disassemble the module.
- (11) Protection film for polarizer on the module shall be slowly peeled off just before use so that the electrostatic charge can be minimized.
- (12) Pins of I/F connector shall not be touched directly with bare hands.
- (13) Do not connect, disconnect the module in the "Power ON" condition.
- (14) Power supply should always be turned on/off by the item 6.1 Power On Sequence & 6.2 Power Off Sequence

9.2 Storage and Transportation.

- (1) Do not leave the panel in high temperature, and high humidity for a long time.
It is highly recommended to store the module with temperature from 0°C to 35°C and relative humidity of less than 70%
- (2) Do not store the TFT-LCD module in direct sunlight.
- (3) The module shall be stored in a dark place. When storing the modules for a long time, be sure to adopt effective measures for protecting the modules from strong ultraviolet radiation, sunlight, or fluorescent light.
- (4) It is recommended that the modules should be stored under a condition where no condensation is allowed.
Formation of dewdrops may cause an abnormal operation or a failure of the module.
In particular, the greatest possible care should be taken to prevent any module from being operated where condensation has occurred inside.
- (5) This panel has its circuitry FPC on the bottom side and should be handled carefully in order not to be stressed.